

# Future challenges in cephalopod research<sup>\*</sup>

JOSÉ C. XAVIER<sup>1,2</sup>, A. LOUISE ALLCOCK<sup>3</sup>, YVES CHEREL<sup>4</sup>, MAREK R. LIPINSKI<sup>5</sup>, GRAHAM J. PIERCE<sup>6,7</sup>,  
PAUL G.K. RODHOUSE<sup>2</sup>, RUI ROSA<sup>8</sup>, ELIZABETH K. SHEA<sup>9</sup>, JAN M. STRUGNELL<sup>10</sup>, ERICA A.G. VIDAL<sup>11</sup>,  
ROGER VILLANUEVA<sup>12</sup> AND ALEXANDER ZIEGLER<sup>13</sup>

<sup>1</sup>Institute of Marine Research, University of Coimbra, 3001-401 Coimbra, Portugal, <sup>2</sup>British Antarctic Survey, Natural Environment Research Council, High Cross, Madingley Road, Cambridge CB3 0ET, UK, <sup>3</sup>Zoology, School of Natural Sciences, and Ryan Institute, National University of Ireland Galway, University Road, Galway, Ireland, <sup>4</sup>Centre d'Etudes Biologiques de Chizé, UMR 7372, CNRS-ULR, BP 14, 79360 Villiers-en-Bois, France, <sup>5</sup>Department of Ichthyology and Fisheries Science, Rhodes University, PO Box 94, Grahamstown 6140, South Africa, <sup>6</sup>Oceanlab, University of Aberdeen, Newburgh, Aberdeenshire AB41 6AA, UK, <sup>7</sup>Departamento de Biologia, Centre for Environmental and Marine Studies (CESAM), Universidade de Aveiro, 3810-193 Aveiro, Portugal, <sup>8</sup>Laboratório Marítimo da Guia, Centro de Oceanografia, Universidade de Lisboa, Avenida Nossa Senhora do Cabo 939, 2750-374 Cascais, Portugal, <sup>9</sup>Department of Mollusks, Delaware Museum of Natural History, 4840 Kennett Pike, Wilmington, DE 19087, USA, <sup>10</sup>Department of Genetics, La Trobe Institute for Molecular Science, La Trobe University, Bundoora, 3086 Victoria, Australia, <sup>11</sup>Centro de Estudos do Mar, Universidade Federal do Paraná, CxP 61, 83255-976 Pontal do Paraná, PR, Brazil, <sup>12</sup>Institut de Ciències del Mar, CSIC, Passeig Marítim de la Barceloneta 37-49, 08003 Barcelona, Spain, <sup>13</sup>Ziegler Biosolutions, Fahrgasse 5, 79761 Waldshut-Tiengen, Germany

*Cephalopods (Mollusca: Cephalopoda) play an important role as keystone invertebrates in various marine ecosystems, as well as being a valuable fisheries resource. At the World Malacological Congress, held 21–28 July 2013 in Ponta Delgada, Azores, Portugal, a number of cephalopod experts convened to honour the contribution of the late Malcolm R. Clarke, FRS (1930–2013) to cephalopod research. Endorsed by the Cephalopod International Advisory Council (CIAC), the meeting discussed some of the major challenges that cephalopod research will face in the future. These challenges were identified as follows: (1) to find new ways to ascertain the trophic role and food web links of cephalopods using hard tissues, stable isotopes and novel concepts in theoretical ecology; (2) to explore new approaches to the study of cephalopod morphology; (3) to further develop cephalopod aquaculture research; (4) to find new ways to ascertain cephalopod adaptation and response to environmental change; (5) to strengthen cephalopod genetics research; and (6) to develop new approaches for cephalopod fisheries and conservation. The present paper presents brief reviews on these topics, followed by a discussion of the general challenges that cephalopod research is bound to face in the near future. By contributing to initiatives both within CIAC and independent of CIAC, the principle aim of the paper is to stimulate future cephalopod research.*

**Keywords:** cephalopods, future research, trophic interactions, morphology, genetics, aquaculture, fisheries, climate change

Submitted 4 December 2013; accepted 14 May 2014; first published online 26 June 2014

## INTRODUCTION

There is a long tradition of researchers striving to predict what might happen in the future. Until recently, most research related to biodiversity and conservation has been performed in an unsystematic manner (Sutherland & Woodroof, 2009; Sutherland *et al.*, 2013). However, an assessment of future research opportunities, knowledge gaps and new areas of science coconstitutes the first step in identifying and communicating hypotheses and insights for the future (Rands *et al.*, 2010; Sutherland *et al.*, 2010). Prognoses for marine ecosystems are becoming increasingly important, because of the threats that have been emerging in recent decades and which require urgent scientific attention. These threats

include global climate change, ocean warming, sea level rise, biodiversity loss, overfishing, ocean acidification and expanding hypoxia (Pauly, 1998; Pauly *et al.*, 1998, 2003; Orr *et al.*, 2005; Rockstrom *et al.*, 2009; Turner *et al.*, 2009). Addressing these challenges asks for greater synergy between research, management and policy, and it will be important to inform researchers and funding agencies as to where their efforts might best be focused.

Cephalopods (Mollusca: Cephalopoda) are widely recognized as playing a pivotal role in many marine ecosystems, both as predators and prey (Clarke, 1996; Piatkowski *et al.*, 2001; Boyle & Rodhouse, 2005). Furthermore, cephalopod fisheries have been increasing steadily in recent decades and it is likely that more species will be commercially exploited in the future (FAO, 2005). As marine biologists whose research is focused on cephalopods, our aims include a better understanding of cephalopod biology and ecology and the role of these organisms in marine ecosystems, identifying patterns and mechanisms, quantifying changes at different scales, recognizing problems and testing potential solutions (e.g. related to conservation, fisheries management and aquaculture). Except for nautilus, cephalopods have a short

<sup>\*</sup>From *Role of Cephalopods in the Marine Environment, a Symposium in Honor of Dr Malcolm R. Clarke, FRS* held at the World Congress of Malacology, 21–28 July 2013 in Ponta Delgada, Azores, Portugal.

**Corresponding author:**  
J.C. Xavier  
Email: jccx@cantab.net

lifespan, rapid growth and semelparous maturation patterns (Boyle & Rodhouse, 2005). These life cycle traits may have positive or negative effects on cephalopod species in relation to environmental change, as cephalopods can be both sensitive (in terms of rapid response) and resilient (in terms of recovery) to phenomena such as overfishing or climate variability and change (Pecl & Jackson, 2008; Rosa & Seibel, 2008; André *et al.*, 2010; Pierce *et al.*, 2010; Hoving *et al.*, 2013; Rodhouse, 2013). However, exactly how these, and other, phenomena affect cephalopods is not yet fully understood. Therefore, a broad discussion of these issues can be valuable in providing guidance for future directions of cephalopod research.

The 2013 World Malacological Congress, held 21–28 July in Ponta Delgada, Azores, Portugal, brought together a number of cephalopod experts to participate in a symposium focusing on the role of cephalopods in the world's oceans. The symposium was held in honour of the late Malcolm R. Clarke, FRS (1930–2013), and was endorsed by the Cephalopod International Advisory Council (CIAC). Malcolm Clarke himself had initiated the CIAC in 1981, and the council was officially founded two years later as an international forum to encourage research on cephalopods, promote international collaboration in cephalopod science, and to provide an official body to answer the increasing number of questions about cephalopods, particularly those related to cephalopod fisheries (Hochberg & Hatfield, 2002). In this paper, cephalopod experts, including present and former members of CIAC, working in specific fields and at different organizational scales, ranging from a species perspective to the ecosystem level, discuss some of the challenges that cephalopod research will face in the future. The individual sections provide brief reviews of topics in cephalopod research that deserve further attention.

## NEW WAYS TO ASCERTAIN THE TROPHIC ROLE AND FOOD WEB LINKS OF CEPHALOPODS

### Studying cephalopods in the world's oceans using top predators as biological samplers: where are we heading? (José C. Xavier)

Knowledge about cephalopods, particularly those from oceanic waters that are not commercially caught, largely originates from analyses of stomach contents collected from their natural predators, such as toothed whales, seals, seabirds, sharks and teleost fish (Clarke, 1996). This is, because current methods for direct sampling, especially of oceanic squid, are still inefficient (Clarke, 1977; Xavier *et al.*, 2007; Hoving *et al.*, 2014). Therefore, an essential tool in the study of cephalopod remains found in predator stomachs is the identification and measurement of their chitinized upper and lower beaks (Clarke, 1986; Cherel *et al.*, 2004; Xavier & Cherel, 2009; Xavier *et al.*, 2011), and, to a lesser extent, the morphological and molecular analysis of soft tissues in case these should still be available (Pierce & Boyle, 1991; Barrett *et al.*, 2007; Karnovsky *et al.*, 2012).

However, the analysis of hard tissues can be biased. For instance, a recent study showed that the ratio of upper to lower beaks in diet samples from top predators varied

significantly during one year as well as between years. This bias was larger in some cephalopod species than in others, resulting in the underestimation of the relative importance of some species in data derived from this approach (Xavier *et al.*, 2011). This can result in an under- or over-estimation of relative cephalopod abundance and suggests that it is essential to count both (i.e. lower and upper) beaks in stomach content analyses. Furthermore, in instances where there is a consistent bias (>30%), all beaks should be identified, and the higher quantity of beak type should be considered to reconstruct the cephalopod component of the diet by mass (Santos *et al.*, 2001; Xavier *et al.*, 2011).

In samples collected from predators that tend to retain material, it is of importance to separate old and fresh material during the initial sorting process in order to obtain a qualitative assessment of the degree of erosion of the material as well (Piatkowski & Pütz, 1994; Cherel *et al.*, 2000; Xavier *et al.*, 2005). These components can then be analysed separately, as required, and the results compared. In general, more effort should be put into describing upper beak morphology to aid identification (Clarke, 1962; Imber, 1978; Pérez-Gándaras, 1983; Wolff, 1984; Kubodera & Furuhashi, 1987; Lu & Ickeringill, 2002; Xavier & Cherel, 2009), to measuring upper beaks in diets, and to developing regressions or allometric equations for estimating cephalopod mass based on both lower and upper beak measurements. Indeed, for numerous species no allometric equations are yet available, which is why scientists have to rely on equations from closely related species. In addition, various allometric equations were produced based on a limited number and size range of cephalopod specimens. Therefore, more material must be collected, particularly from cephalopod natural predators or by research, as well as commercial fishing vessels.

Malcolm Clarke emphasized the importance of additional ship time devoted to cephalopod research, as well as the need for the development of better capture methods (Xavier *et al.*, 2007; Hoving *et al.*, 2014). Many cephalopods are fast-swimming organisms and therefore it is usually only the small or less-mobile specimens that are captured (Clarke, 1977). This dilemma still holds true, despite a long history of sampling. In order to maximize the success rate of capturing bigger specimens, larger nets and modified net gear (e.g. underwater lights) have been developed to attract cephalopods into the nets (Clarke & Pascoe, 1997, 1998; Clarke, 2006). However, new techniques are required to enhance the catch ratio of poorly-known cephalopod species in the world's oceans in order to complement the work already being carried out on the feeding and foraging ecology of cephalopod predators.

### Stable isotopes, hard tissues and the trophic ecology of cephalopods (Yves Cherel)

Stable isotopes ( $\delta^{13}\text{C}$  and  $\delta^{15}\text{N}$ ) have recently emerged as new efficient intrinsic markers of the trophic ecology of cephalopods (Jackson *et al.*, 2007), and pioneer investigations (Takai *et al.*, 2000; Cherel & Hobson, 2005) have led to a steady increase in the use of the method over the last 10 years (Navarro *et al.*, 2013). In this section, attention will be paid to the most recent findings, methodological issues and perspectives on the use of these tools on hard tissues of cephalopods.

In contrast to soft tissues (e.g. mantle), hard tissues (i.e. beaks, gladii, statoliths and eye lenses) are metabolically inactive structures that grow continuously by accretion of new molecules with no turnover after synthesis. Consequently, these structures retain molecules laid down throughout the lives of cephalopods, and their  $\delta^{13}\text{C}$  and  $\delta^{15}\text{N}$  values thus integrate the feeding ecology of individuals over their lifetime. Indeed, various parts of hard tissues have different isotopic signatures. For example,  $\delta^{13}\text{C}$  and  $\delta^{15}\text{N}$  values of the tip of the wings and anterior tip of the gladius (i.e. the most recently synthesized parts of lower beaks and gladii, respectively) integrate the feeding ecology prior to capture (Cherel & Hobson, 2005; Hobson & Cherel, 2006; Cherel *et al.*, 2009a). Gladii have the advantage over beaks that their growth increments are larger, better defined and easier to sample along the longitudinal proostracum axis (Cherel *et al.*, 2009a). Furthermore, in the most recent part of the gladius, assuming increments are daily, a day-by-day picture can also be established which can directly be related to body size (as gladii length is approximately the same as the dorsal mantle length; Graham Pierce, unpublished data).

Stable isotopes from hard structures have two practical advantages and one methodological disadvantage. Firstly, measuring the isotopic signature of serially sampled beaks and gladii presents the unique opportunity to reconstruct the foraging history of individuals. For example,  $\delta^{15}\text{N}$  profiles of beaks from *Architeuthis dux* suggest an ontogenetic shift early in life (Guerra *et al.*, 2010), and sequential isotopic values along gladii of *Dosidicus gigas* highlight contrasted individual foraging strategies (Ruiz-Cooley *et al.*, 2010; Lorrain *et al.*, 2011). In the same way, the only published investigation on concentric eye lens layers reveals variations in  $\delta^{13}\text{C}$  and  $\delta^{15}\text{N}$  values at fine temporal scales, indicating substantial variability in squid feeding patterns (Hunsicker *et al.*, 2010a). Secondly, the combination of the stable isotope techniques with the use of predators as biological samplers, and cephalopod identification using external features of accumulated beaks in predators' stomachs (Clarke, 1986; Xavier & Cherel, 2009) allows information to be gathered on poorly known species. This method has already revealed new trophic relationships and migration patterns together with the trophic structure of deep-sea cephalopod assemblages (Cherel & Hobson, 2005; Cherel *et al.*, 2009b).

However, a main problem with using  $\delta^{13}\text{C}$  and  $\delta^{15}\text{N}$  values of hard structures is that biological interpretation is confused by differences in biochemical composition between hard and soft tissues. Beaks and gladii contain not only protein but also chitin (Hunt & Nixon, 1981; Rubin *et al.*, 2010), a modified polysaccharide that contains impoverished  $^{15}\text{N}$  nitrogen (Schimmelmann, 2011). The presence of chitin explains why hard tissues have consistently much lower  $\delta^{15}\text{N}$  values than soft tissues (Cherel *et al.*, 2009a). Moreover, the ratio of chitin to protein varies within beaks, with the undarkened, darkening and darkened parts of beaks containing decreasing amounts of chitin (Rubin *et al.*, 2010). Chitin content is thus likely to be different between individual beaks (e.g. small, undarkened vs large, darkened beaks), and the gladius is richer in chitin than darkened beaks (Hunt & Nixon, 1981). This particular issue is analogous to that arising from the different fractionation apparent in lipids compared to other components of soft tissues. Three different approaches enable the 'chitin effect' to be dealt with, namely the use of isotopic correction factors between hard and soft tissues (Hobson

& Cherel, 2006; Cherel *et al.*, 2009a), the removal of chitin and measuring stable isotopes on amino acids. Determining the stable isotope ratios of chemically extracted proteins from hard tissues has not yet been performed, but a more promising way is to measure  $\delta^{15}\text{N}$  values of amino acids resulting from protein hydrolysis. Selecting appropriate source and trophic amino acids (e.g. phenylalanine and glutamic acid, respectively) allows quantification of both  $\delta^{15}\text{N}$  baseline levels and the trophic position of consumers relative to the baseline (i.e. the  $\delta^{15}\text{N}$  signature of source amino acids (e.g. phenylalanine) does not increase along the food chain, while that of trophic amino acids (e.g. glutamic acid) does—hence the  $\delta^{15}\text{N}$  difference between trophic and source amino acids is a direct estimation of the trophic position of an organism. This approach was recently used on cephalopod hard tissues, including cuttlefish cuttlebone (Ohkouchi *et al.*, 2013) and squid gladii (Ruiz-Cooley *et al.*, 2013) and has the potential to depict previously unknown trophic relationships, habitat use and migration patterns of cephalopods in marine ecosystems.

### Population dynamics of cephalopods under a trophic relations (as well as age and growth) context: possible future research (Marek R. Lipinski)

The present-day population dynamics of cephalopods are still largely at the descriptive, natural-history stage. The best summaries of current knowledge were given by Boyle & Boletzky (1996), Boyle & Rodhouse (2005) and Rodhouse *et al.* (in press).

The known data on cephalopod population dynamics that has been widely and comprehensively quantified may serve a practical purpose in the management of fishable stocks of selected species of octopods, cuttlefish and squid (Rodhouse *et al.*, in press). This part, however, largely ignores the general theoretical framework of population dynamics in ecology (described by Turchin (2003)), based on predator–prey interactions. However, there are efforts aimed at incorporating predator–prey relationships in sustainable resource management (Bowman *et al.*, 2000; Overholtz *et al.*, 2000, 2008; Tyrrell *et al.*, 2008, 2011). Hence, predation should be considered in setting maximum sustainable yield (MSY) for a fishery, including those fisheries exploiting squid (such as *Doryteuthis pealeii* and *Illex illecebrosus*). When this is done, MSY is usually considerably smaller. Model inputs are usually based on stomach contents analysis, and actual consumption is calculated (subject to some assumptions). The underlying reasoning is that a lack of this resource in the diet of predators will be to the detriment of these predators.

However, this may not correspond to reality. This approach usually assumes either a specialist character of these predators, or at best, a hyperbolic response of a generalist predator, according to a model where

$$dN/dt = rN(1 - N/k) - gN/d + N$$

with  $N$ : population density;  $r$ : per capita rate of population change;  $k$ : carrying capacity (logistic);  $d$ : half-saturation constant (hyperbolic);  $g$ : total killing rate by generalist predators;  $h$ : half saturation constant (sigmoid) (Turchin, 2003). However, cephalopods are opportunistic generalists both as predators and in turn are preyed upon by generalist predators

themselves (preyed upon by fish, birds, mammals and cephalopods), giving a sigmoid response to predation according to the model

$$dN/dt = rN(1 - N/k) - gN^2/h^2 + N^2.$$

These two scenarios are illustrated in Figure 1, where solid lines represent *per capita* growth rates of the prey population in the absence of predators, whilst dashed curves represent *per capita* death rate of prey as a result of predation. Numbers correspond to the specific cases (out of many possible). In the hyperbolic scenario (Figure 1A), case 1 refers to the total extinction of prey as a result of predation. Case 2 is the situation where only very high density of prey secures the end equilibrium (and hence the survival of prey). Case 3 ends with survival of the prey population regardless what happens, therefore predators have a minimum impact upon their prey. In the sigmoid scenario (Figure 1B), case 1 refers to an equilibrium where prey densities are low (survival is probable); case 2 represents three equilibria and therefore the final result depends upon the initial conditions, but all of them are likely to be stable (survival of prey is probable in most situations); and in case 3 equilibrium is reached at high prey densities, therefore survival is even better than in case 1.

Given the above, future work should apply theoretical ecology models to real cephalopod populations, and only then should feed into well-intentioned resource management. This is not happening as of yet, simply because it is a

complicated task. Cephalopods will require the development of a 'multi-opportunistic links model' compatible with other findings of theoretical ecology. This model may be useful for fisheries management only if the required parameters can be obtained or assessed in practice.

A second case study considered here is on cephalopod age, ageing, longevity and growth from a population dynamics perspective. This field also has a background in theoretical ecology (Turchin, 2003), with its emphasis on changing ages, different average longevity (and ultimately, growth parameters) with change between subsequent generations, and on the influence these changes may have on oscillating numbers of individuals in a population. Here, in contrast to the field of predator-prey relationships, theoretical ecology feeds into practical applications (Quinn & Deriso, 1999), although the focus is somewhat different. Cephalopods, however, have not yet been the subjects of thorough studies in this discipline. This is, because it is felt that some fundamental problems in understanding population structuring have not yet been resolved. There is a relative abundance of age data, but a paucity of studies using these data to model population structure based either on generations (for theoretical purposes) or to construct suitable keys (e.g. age-length) for stock assessment and management analyses.

Therefore, there is a need for new research and more data. Firstly, there is a requirement for physiological studies on the interpretation of age marks (mostly biomineralization studies) to construct true instead of biased validation procedures. Secondly, no one has so far adequately addressed Daniel Pauly's paradox regarding the metabolic limitation of squid growth (Pauly, 1998): according to him, large squid cannot grow quickly due to their energetic requirements, which goes against the age readings of squid statoliths (supported by aquarium observations), which in turn support the inference that large squid do grow quickly. However, a good start to reconciling these contradictory data was made by O'Dor & Hoar (2000). Thirdly, studies of cephalopod growth are required, that will combine a theoretical ecology approach (suffering at the moment from an assumption of non-overlapping generation cycles) (Turchin, 2003), a wealth of matrix models (Quinn & Deriso, 1999), and a solid physiological basis (which is lacking at the moment). It is to be hoped that the state of the art, presently fragmented into these three areas (Arkhipkin & Roa-Ureta, 2005; André *et al.*, 2009; Keyl *et al.*, 2011; Semmens *et al.*, 2011; Zavala *et al.*, 2012), will improve in the future.

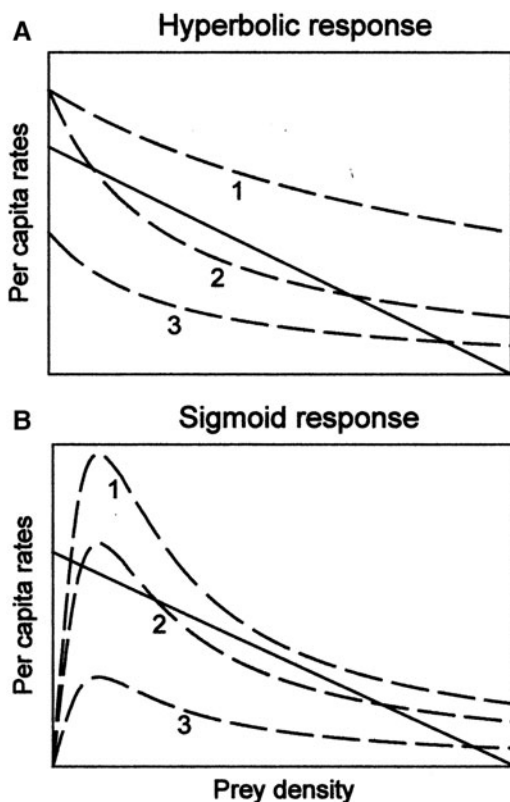


Fig. 1. Different *per capita* growth rates of prey, according to the presence or absence of predators: (A) hyperbolic response; (B) sigmoid response. See the main text for explanation. Modified from Turchin (2003), with copyright permission from Princeton University Press.

#### NEW APPROACHES TO THE STUDY OF CEPHALOPOD MORPHOLOGY (ELIZABETH K. SHEA, ALEXANDER ZIEGLER)

Comparative morphology is an essential, yet increasingly rare specialty in organismic biology. The slow pace of work for detailed analysis and the current lack of a centralized repository for morphological data contribute to the widely-cited 'taxonomic impediment' that contemporary biodiversity research is facing (Crisci, 2006; de Carvalho *et al.*, 2007). Due to the lack of open access to structural data, molecular methods (e.g. barcoding) are rapidly supplanting morphology in systematics and taxonomy research, resulting in a one-sided discussion about invertebrate relationships and evolution.

Rejuvenating morphological research through the development of online repositories for morphological data will provide new avenues of inquiry that would contribute substantively to systematic and taxonomy research. In addition, morphology would become a more accessible contributor to large interdisciplinary research initiatives such as the Census of Marine Life (Decker & O'Dor, 2003) or major online compilations of organismic data such as the Encyclopedia of Life (Wilson, 2003). In this section, we highlight several new and developing digital techniques that have the potential to expedite morphological work, and which could encourage a shift in focus from data acquisition to data analysis, consequently resulting in a more rapid and regular research output in cephalopod morphological research.

Cephalopod beak identification is notoriously difficult, but an in-depth understanding of beak morphology is critical to stomach content analyses, as well as for an understanding of predator–prey dynamics (Clarke, 1986; Xavier & Cherel, 2009). Three-dimensional (3D) anaglyph images constitute an alternative to complex line drawings or photographs (Xavier & Cherel, 2009). Richard E. Young is in the process of building a collection of such images, archiving them on the Tree of Life Web Project website ([http://www.tolweb.org/notes/?note\\_id=4541](http://www.tolweb.org/notes/?note_id=4541)). The upper and lower beaks of over 140 species from all major clades have so far been analysed (Young, 2009). In addition, new hybrid approaches such as rotational scanning electron microscopy (SEM) could be used to image minuscule morphological features such as statoliths, sucker dentition or cartilaginous strips and tubercles at very high resolutions and in 3D (Cheung *et al.*, 2013).

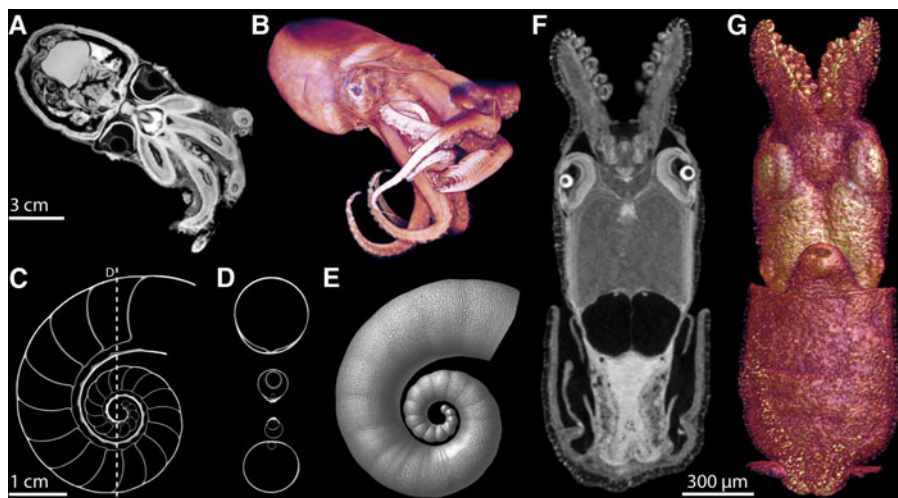
In addition, robotic microscopy systems developed for applications in pathology permit rapid digitization of histological sections on a large scale and at high resolutions (Al-Janabi *et al.*, 2012). Such systems could be used to digitize and catalogue histological data on cephalopod neuroanatomy, such as, for example, the John Z. Young slide collection deposited at the National Museum of Natural History (Washington, DC, USA). The resulting tomographic image stacks can be aligned using semi-automatic and automatic algorithms

(Eliceiri *et al.*, 2012), and can subsequently be made accessible as full 3D datasets in online repositories. These image stacks would then become a baseline of information that permits directly connecting past research (Young, 1971) to present compilations (Nixon & Young, 2003), as well as future studies.

Furthermore, non-invasive scanning techniques such as magnetic resonance imaging (MRI), computed tomography (CT), or micro-computed tomography ( $\mu$ CT) now allow analysing whole specimens from the millimetre to the metre scale (Walter *et al.*, 2010). Following dataset acquisition, specialized (but often open source) software can be used to virtually dissect the scanned specimen in real-time and in 3D (Ziegler & Menze, 2013). While MRI is particularly suitable for soft tissue imaging (Ziegler *et al.*, 2011a), the X-ray-based techniques CT and  $\mu$ CT constitute the methods of choice for hard part imaging (Ziegler *et al.*, 2010). However, specimen state (*in vivo* or *ex vivo*), scanning medium (e.g. air, ethanol, formalin, water), scanning time (minutes to hours), dataset resolution (nm to  $\mu$ m), as well as scanning cost per specimen (up to many hundreds of US\$) may vary considerably and primarily depend on the system used.

Due to the dominance of soft tissues, cephalopods constitute suitable candidates for MRI scanning (Ziegler *et al.*, 2011a). For example, 3D MRI datasets can be used to visualize internal organs in their natural context (Figure 2A, B). In contrast, mineralized tissues present in cephalopods (e.g. eye lenses, beaks, statoliths, shells) can be rapidly visualized using CT or  $\mu$ CT (Figure 2C–E). However, whole specimen staining using electron-dense elements such as iodine or tungsten (Metscher, 2009; Kerbl *et al.*, 2013) also allows analysing soft tissues of smaller cephalopod specimens using  $\mu$ CT (Figure 2F, G).

Current online projects such as The Digital Fish Library (Berquist *et al.*, 2012) or The Digital Morphology website (<http://digimorph.org/>) provide a good starting point for the web-based hosting of morphological data and constitute potential infrastructures for future efforts in cephalopod research. In addition, dissemination of complex biological structures is still carried out primarily in the form of two-dimensional publications (Ziegler *et al.*, 2011b), although interactive 3D models



**Fig. 2.** Analysis of cephalopod specimens using non-invasive imaging techniques. The two- and three-dimensional visualizations shown here are based on a magnetic resonance imaging dataset of a whole museum wet specimen of *Bathypolypus arcticus* (A, B), a micro-computed tomography ( $\mu$ CT) dataset of the dry shell of *Spirula spirula* (C–E), and a  $\mu$ CT dataset of a tungsten-stained wet specimen of *Idiosepius pygmaeus* (F, G) (dataset courtesy of Brian D. Metscher).

based, for example, on the ubiquitous portable document format (PDF) have been integrated into electronic publications already for several years (Ruthensteiner & Heß, 2008; Kumar *et al.*, 2010). Nonetheless, continued development of such approaches is required in order to adapt them, for example, to mobile devices. Furthermore, 3D printing is poised to become an important tool in the communication of complex biological structures, whether in research or in teaching (Kelley *et al.*, 2007; Ziegler & Menze, 2013).

In general, digital morphological techniques permit shifting the workload from data acquisition to data analysis, which will open new avenues of research both across and within cephalopod species. Previously collected, well-identified, and data-rich museum specimens could form the backbone of a large-scale, non-invasive scanning program (Ziegler, 2012). Apart from developing a collection of 3D datasets that can be accessed in the form of a digital museum collection, the novel, high-throughput scanning techniques described above provide new opportunities for a variety of cephalopod specimens. For example, scanning of bulk-collected, commercially-trawled cephalopods could be employed to answer long-standing questions of character variation within species (Vecchione *et al.*, 2005). Reared cephalopods such as *Sepia officinalis* could be used for *in vivo* experiments, where images taken before and after a stimulus would be required. Furthermore, specimens too valuable for dissection (e.g. holotypes) can now be scanned with virtually no impact on the specimen and be made fully accessible online in 3D.

Cephalopods constitute a small-enough class of molluscs that an effort to digitally scan one representative from each genus or species would constitute a realistic goal, and one that should be pursued in parallel to molecular barcoding (Strugnell & Lindgren, 2007). A concise, user-friendly, widely-disseminated, morphological infrastructure that parallels ongoing efforts to barcode all cephalopod species would render cephalopods not just a group with multiple model organisms, but also a model clade for systematic and taxonomy research.

#### CHALLENGES IN CEPHALOPOD CULTURE (ROGER VILLANUEVA, ERICA A. G. VIDAL)

Experimental approaches have been an important tool for understanding fundamental principles of cephalopod life cycles, physiology and behaviour, thus providing the basis for pilot commercial culture of some species. A recent publication summarizes modern culture techniques used for the most common cephalopod species (Iglesias *et al.*, 2014). Another publication focuses on four species which are highlighted as cephalopod culture models for which there are comprehensive data available, primarily because they are frequently used by researchers around the world, namely *Sepia officinalis*, *Sepioteuthis lessoniana*, *Octopus maya* and *O. vulgaris* (Vidal *et al.*, 2014). These four species show versatile characteristics for culture, such as fast growth and high food conversion rates. In addition, these species mate and spawn in captivity, laying eggs that, with the exception of *O. vulgaris*, produce large hatchlings. These biological features make them suitable candidates as experimental laboratory animals with a potential for aquaculture. However, nearly all zootechnical aspects related to the culture of these species

still require improvement and need to be adapted for closely related species from different geographical regions.

At present, most of our knowledge about cephalopod culture techniques relies on shallow water species. This is due to the relatively easy access to this group of cephalopods, most of them with commercial interest, and to the ease of reproducing the characteristics of coastal waters in the laboratory. In contrast, techniques for the maintenance of oceanic or deep-sea cephalopods remain virtually unexplored. In particular, little experimental work has been directed towards deep-sea octopods (Wood *et al.*, 1998; Hunt, 1999), oceanic squids (O'Dor *et al.*, 1977; Bower & Sakurai, 1996; Hunt, 1999; Bush, 2012; Hoving & Robison, 2012; Villanueva *et al.*, 2012), or polar species (Daly & Peck, 2000). However, as research efforts in the open ocean, the deep sea, and polar regions are bound to increase around the world in the near future, methods for the study of captured cephalopods from these regions will be needed to obtain new information on their life cycles and ecology.

High-priority research targets in cephalopod culture are the development of sustainable artificial foods and the control of reproduction (Villanueva *et al.*, 2014). Littoral cephalopods are carnivorous and require food rich in protein to maintain their vigorous metabolism, as well as high quality lipids rich in essential fatty acids, phospholipids and cholesterol to sustain their fast growth. Recent efforts to obtain artificial foods have shown promising results (Rosas *et al.*, 2008, 2013; Martínez *et al.*, 2014). However, a major challenge will be to develop a sustainable artificial diet independent from fisheries products, completely formulated from plant sources, and in addition supporting good survival and growth, as is now a reality for some marine carnivorous fish (Watson *et al.*, 2013). The study of feeding dynamics of delicate planktonic paralarvae of cephalopods should also become a priority, because it would enable the commercial culture of octopod species such as *O. vulgaris*, which produce small eggs (Iglesias *et al.*, 2007; Villanueva & Norman, 2008). For example, an adapted, enriched *Artemia* protocol would be desirable to feed planktonic octopods or squids—recent work is currently shedding light on this aspect (Guinot *et al.*, 2013).

A further area of development required to facilitate cephalopod culture is the control of reproduction and an understanding of the effects of maternal condition on egg quality and offspring competence. Currently, egg masses are collected from the field, are obtained by spontaneous spawning in aquaria, or stem from *in vitro* fertilization. As cephalopods are semelparous and often have a natural spawning period restricted to a few months in the year, researchers currently need to adapt their laboratory studies, timing and experimental protocols to the natural sexual maturation period of the target species. The development of methods to accelerate or retard sexual maturation and spawning in aquaria will open new experimental possibilities and will be particularly useful to the planning and development of commercial culture. The influence of light intensity and photoperiod on sexual maturation has been studied in a few cases (Richard, 1971; Zúñiga *et al.*, 1995) and, if extended, could open new opportunities for the control of reproduction. Furthermore, in cephalopod culture, the development of ethical guidelines that aim to reduce pain, suffering and stress are strongly encouraged and should be based on the 3Rs principle, i.e. *replacement, refinement and reduction* (Mather & Anderson,

2007; Moltschaniewskyj *et al.*, 2007; Andrews *et al.*, 2013; Fiorito *et al.*, 2014).

Finally, genetic intervention has already been applied to other metazoans in culture in order to enhance production of cultured animals and to tackle challenges in culture (Hulata, 2001). Such an approach can be expected to have the potential for taking cephalopod culture to the next level. Important new research topics in this respect would be genomic sequencing or studies looking for genes that code for particular traits or that govern protein expression. For example, it would be interesting to identify the genes responsible for desirable broodstock features, control of sexual maturation, growth, immunology and pathology.

## NEW WAYS TO RESEARCH CEPHALOPOD ADAPTATIONS AND RESPONSES TO ENVIRONMENTAL CHANGE

### Cephalopods and climate change (Paul G. K. Rodhouse)

The effects of global climate change will include warming of the atmosphere and the oceans, intensification of ocean currents, more frequent and intense extreme weather events, retreat of sea ice in the polar regions, reduction in the depth of the oxygen minimum layer and reduced seawater pH (Raven *et al.*, 2005). These physical changes will drive changes in marine ecosystems, which are predicted to reduce biodiversity, although they will not necessarily reduce overall primary and secondary production. However, these effects will not be uniform. Currently, warming of the atmosphere is most intense in Alaska, Siberia, and the Antarctic Peninsula. In addition, warming of the ocean surface and upper layers in the vicinity of the Antarctic Peninsula has been reported by Meredith & King (2005).

Because cephalopods are poikilotherms, they could be expected to physiologically respond to ocean warming. Warming will increase growth rate (subject to food availability and sufficient water oxygen), shorten lifespan, and increase turnover, which in turn might drive changes in life history parameters (Pecl & Jackson, 2008). This will only happen if the species do not shift their distribution in response to warming in order to remain within their present thermal environment. However, there is evidence that some species expand their distribution when facing a warmer environment (Zeidberg & Robison, 2007; Golikov *et al.*, 2013).

Furthermore, many cephalopods, especially the oegopsid squids, produce planktonic paralarvae, which, by definition, are transported by ocean currents and have been shown in some species to be dependent on mesoscale structuring in the ocean to complete their planktonic phase (Bakun & Csirke, 1998; Dawe *et al.*, 2000). Such species are likely to be affected by changes in oceanic circulation, the effects of which may be positive or negative. For example, small changes in large-scale circulation are unlikely to affect Antarctic squid, but changes in mesoscale oceanography may have a significant impact (Rodhouse, 2013).

Extreme local events such as storms or basin-scale events such as the El Niño Southern Oscillation or North Atlantic Oscillation, which are predicted to be intensified by global

climate change, will influence changes in populations (Hoving *et al.*, 2013). Basin-scale events are known to drive variability in the recruitment and abundance of species, including *Illex argentinus* (Waluda *et al.*, 1999), *I. illecebrosus* (Dawe *et al.*, 2000) and *Dosidicus gigas* (Waluda *et al.*, 2006). Intensification of such events might be deleterious and/or advantageous to these species, but there are currently no models which can predict likely outcomes.

In the polar regions, changes in sea ice may cause changes in the distribution of some species, but there are no species known to be dependent on sea ice as, for instance, is the Antarctic krill *Euphausia superba* (Murphy *et al.*, 2007; Constable *et al.*, in press; Xavier & Peck, in press). In these high latitudes, changes in ocean ecology driven by retreating sea ice may have a greater effect on cephalopod populations than the direct effect of ice retreat.

At least two cephalopod species, *D. gigas* and *Vampyroteuthis infernalis*, are associated with the oxygen minimum layer, where they descend to during daylight (Robison *et al.*, 2003; Rosa & Seibel, 2008; Hoving & Robison, 2012). These two species are physiologically adapted to survive the low oxygen tension of the oxygen minimum layer, and probably enjoy the selective advantage of avoiding active water-breathing predators in this zone. Depending on how widespread this habit is among pelagic cephalopods, changes in the oxygen minimum layer associated with global climate change will have effects on other species (Bograd *et al.*, 2008; Stramma *et al.*, 2008; Keeling *et al.*, 2010; Gilly *et al.*, 2013).

Furthermore, all cephalopods possess calcareous statoliths, while some possess larger mineralized structures such as an external shell (e.g. nautilus) or an internal shell (e.g. cuttlefish). Although there is some evidence that cuttlefish are pre-adapted to ocean acidification (Gutowska *et al.*, 2008), there is still a need for more data on the effects of reduced ocean pH on cephalopods.

Cephalopods evolved from an ancestral mollusc in the Cambrian. They have survived major extinction events at the end of the Palaeozoic and at the end of the Mesozoic, and have thrived in spite of competition from fish (Packard, 1972; Rodhouse, 2013). Although some cephalopod groups such as ammonites and belemnites became extinct in geological time, the coleoids have survived and radiated. Their life history traits have adapted them for ecological opportunism and provide them with the potential to quickly evolve in response to new selection pressures (Murphy *et al.*, 1994; Murphy & Rodhouse, 1999; Hoving *et al.*, 2013). There is, therefore, reason to believe that these characteristics will enable cephalopods to evolve under global climate change, enabling them to avoid becoming extinct, and ultimately giving rise to new forms adapted to a new 'greenhouse world'.

### Physiological adaptations of cephalopods to environmental change (Rui Rosa)

Coastal marine ecosystems are warming at a higher rate than most other ecosystems (MacKenzie & Schiedek, 2007). Because many coastal organisms already live close to their thermal tolerance limits (Helmuth *et al.*, 2006), ocean warming is expected to negatively impact their performance and survival. Cephalopods are some of the most adaptable marine organisms, capable of adjusting their biology (and

**Table 1.** Responses of different cephalopod life stages to ocean acidification.

Species	Life stage	Ecological parameters	Effect	Reference
<i>Sepia officinalis</i>	Embryo	$p\text{CO}_2$ 400–1650 ppmv; pH 8.0–7.5; 18 and 22°C	Lower survival rate; metabolic depression; premature hatching; lower hypoxic threshold	Rosa <i>et al.</i> (2013a)
<i>Sepia officinalis</i>	Juvenile	$p\text{CO}_2$ 705–6068 ppmv; pH 8.0–7.1; 16–17°C	4% daily increase in body mass; mass of calcified cuttlebone increased 5- to 7-fold	Gutowska <i>et al.</i> (2008, 2010)
<i>Loligo vulgaris</i>	Embryo	$p\text{CO}_2$ 424–1680 ppmv; pH 8.0–7.5; 13, 15, 17, and 19°C	Lower survival rate; shorter mantle length; premature hatching; greater incidence of abnormalities; metabolic depression; lower thermal limit; increased heat shock response	Rosa <i>et al.</i> (2014)
<i>Doryteuthis pealeii</i>	Paralarva	$p\text{CO}_2$ 390–2200 ppmv; pH 8.0–7.3; 20°C	Increased time of hatching; shorter mantle length; statoliths with reduced surface area; abnormally shaped statoliths with increased porosity and altered crystal structure	Kaplan <i>et al.</i> (2013)
<i>Dosidicus gigas</i>	Juvenile	$p\text{CO}_2$ 380–1000 ppmv; pH 8.0–7.5; 10°C	Metabolic depression; reduced aerobic scope; reduced level of activity	Rosa & Seibel (2008)

life cycles) according to the prevailing environmental conditions (Boyle & Rodhouse, 2005; Hoving *et al.*, 2013). Yet, although their short lifespans and great life history plasticity allow them to respond rapidly to new climate regimes, ocean warming may cause serious biological impairments to the more vulnerable early ontogenetic stages, namely shorter embryonic periods and an increased likelihood of premature hatching (Rosa *et al.*, 2012b, 2014). Future changes in ocean chemistry are also expected to pose particular problems. Cephalopods possess statoliths that may be reduced and abnormally shaped (with increased porosity) under hypercapnia (Kaplan *et al.*, 2013). It is also noteworthy, that along with the rise of  $p\text{CO}_2$  in the embryo (combined with a drop in pH and  $p\text{O}_2$ ), the current record of oxygen tension below critical  $p\text{O}_2$  values reveals that the harsh (i.e. hypoxic and hypercapnic) conditions inside cephalopod egg capsules are expected to be magnified in the future (Rosa *et al.*, 2013a). Such environmental conditions may promote untimely hatching and smaller post-hatching body sizes (Table 1), thus challenging survival and fitness.

In the last few decades, marine hypoxia has become a major ecological concern (Diaz & Rosenberg, 2008). Surprisingly, some squids that were thought to be driven from hypoxic areas due to anatomical and physiological constraints (e.g. *Dosidicus gigas*) instead seem to benefit from expanding hypoxia (Rosa *et al.*, 2013b). Nonetheless, the synergistic impact of these climate-related factors (i.e. hypoxia, global warming and ocean acidification) is expected to compress the habitable night-time depth range of these vertically migrating squid species due to unfavourable high temperature and decreasing pH at the ocean surface (Rosa & Seibel, 2008).

At macroecological scales, a species distribution model (SDM) linked to the field of conservation physiology may help to explore future changes in the global patterns of cephalopod diversity. However, the reliability of SDM-based predictions needs to be improved, because models often lack a physiological underpinning and rely on assumptions that may be unrealistic under global climate change. For instance, additional information on the limits of thermal tolerance (e.g. maximum critical temperature (CT<sub>Max</sub>), lethal temperature at which 50% of the sample population dies (LT<sub>50</sub>)) will improve our ability to predict the effects of climate change on the present distribution patterns of cephalopods (Rosa *et al.*, 2008a, b, 2012a).

## FUTURE CEPHALOPOD RESEARCH IN GENETICS (JAN M. STRUGNELL)

The volume of research that contains cephalopod genetic sequences has increased markedly over the last 20 years, in particular thanks to the decreasing costs of molecular sequencing. Prices are now sufficiently low for sequencing to become an attractive research tool for scientists representing a range of disciplines, including fisheries science, systematics, or neuroscience and developmental biology. The next exciting wave of genetic research on cephalopods is approaching as the first cephalopod genomes are being sequenced. Genome sequencing of at least ten cephalopod species is currently underway, representing a broad range of taxonomic groups, including *Octopus vulgaris*, *O. bimaculoides*, *Hapalochlaena maculosa*, *Sepia officinalis*, *Doryteuthis pealeii*, *Euprymna scolopes*, *Idiosepius paradoxus*, *I. notoides*, *Architeuthis dux* and *Nautilus pompilius* (Albertin *et al.*, 2012). Obtaining high-quality whole genome sequences of cephalopods will stimulate new inquiries by providing a wide range of research opportunities in which a reference genome is required, as well as in the interpretation of the genomes themselves.

However, the sequencing of cephalopod genomes is not without its challenges, and early work has shown cephalopod genomes to be large and to contain many repeated regions, making sequence assembly difficult (Albertin *et al.*, 2012). In addition, at least one whole genome duplication event has been suggested to have occurred during the evolution of the Cephalopoda (Hallinan & Lindberg, 2011), which may further complicate assembly. Nonetheless, important lessons in sequencing whole molluscan genomes have been learned through sequencing of the few whole molluscan genomes that exist to date (i.e. *Lottia*, *Aplysia* and *Biomphalaria*). But, although best-practice methods of sequencing and assembly are being implemented (Albertin *et al.*, 2012), the task will not be trivial.

In addition, annotation of cephalopod genomes will likely prove to be a significant challenge as well. Part of the annotation process for a novel genome typically involves *de novo* gene prediction, a task that is known to be difficult and error-prone (Albertin *et al.*, 2012; Yandell & Ence, 2012). Large taxonomic distances exist between cephalopods and taxa with well-annotated animal genomes, which will increase the difficulties of annotation. Therefore, the sequencing of



corresponding transcriptome data will be essential to supplement any *de novo* predictions, because it definitively identifies regions of the genome that are transcribed, and thus can help to identify boundaries between genes through differences in transcript abundance.

Despite these initial difficulties, the sequencing of the first cephalopod genome holds great promise for improving our understanding of the evolution and function of this fascinating group of marine organisms. Completely sequenced genomes will provide researchers with the ability to thoroughly study the function of different genes and also to investigate evolutionary relationships, not only within cephalopods, but also more broadly within molluscs and lophotrochozoans. In addition, whole genomic data of cephalopods will open up fields of research that have to date largely been unavailable or subject to only a handful of studies. Such research areas include epigenetic modification, RNA editing and microRNAs (Albertin *et al.*, 2012).

The development of a cephalopod model organism (possibly *Idiosepius* due to its small size) will allow focused studies of the development of the cephalopod body plan. This will facilitate investigation and understanding of many morphological features characteristic of cephalopods that are commonly suggested to be 'vertebrate-like', such as complex eyes, well-developed brains and highly differentiated vascular and neuroendocrine systems. As such, research of the evolution and development of these features, facilitated by whole-genome data, may not only provide further insight into cephalopod evolution, but also into the evolution of man (depending on whether the similarity to vertebrate structures is superficial or based on genuine homology).

## CHALLENGES IN CEPHALOPOD FISHERIES AND CONSERVATION

### The future trends in cephalopod fisheries (Graham J. Pierce)

Historically, cephalopod fisheries have been less important in the north-east Atlantic compared to much of the rest of the world (Caddy & Rodhouse, 1998; Hunsicker *et al.*, 2010b), despite a strong tradition of cephalopod consumption in southern Europe. However, a combination of declines in other fishery resources has led to an increase in directed cephalopod fishing as well as increased attention from fishers, national governments, and fisheries organizations such as the International Council for the Exploration of the Sea. In Europe, therefore, the short-term trend is likely to be an increased effort in cephalopod fishing, extending exploitation to currently under- or unexploited species, coupled with novel implementation of formal stock assessment and regulated fishing policies. However, it is fairly unlikely that existing stocks can absorb a substantial increase in fishing pressure (Royer *et al.*, 2002) and past experience shows that the unpredictable nature of cephalopod abundance tends to discourage commercial fishery interests (Young *et al.*, 2006).

These remarks can be generalized to world cephalopod fisheries in the sense that landings have been increasing (at least until around 2005), new species have assumed high importance (notably *Dosidicus gigas* in the eastern Pacific) and evidence is already being seen of overexploitation in

some areas (Pierce & Portela, 2014). A key issue will be understanding the rise (and fall) of important cephalopod fisheries, especially those of ommastrephid squids such as *Todarodes pacificus*, *Illex argentinus* and *D. gigas*. While we suspect that environmental sensitivity is one key to understanding population trajectories, effects of overexploitation may at least partially explain some of the spectacular crashes like that of the *T. sagittatus* fishery off Norway in the mid-1980s. As suggested above, global climate change may have a range of impacts on cephalopod populations and may result in a shift in the relative importance of fisheries and environment in controlling population dynamics.

Cephalopod culture, especially for *Octopus* spp. (Iglesias *et al.*, 2014), may help to fill the growing demand for cephalopods in Europe and its export markets. Relevant recent developments in cephalopod culture include *in vitro* fertilization (Villanueva *et al.*, 2011). Nonetheless, artisanal fisheries will remain important, and are increasingly in need of assessment and management that is appropriate to the small scale of the fisheries and the particular biological features of the resource species. However, perhaps the biggest question mark concerns whether exploitation of deep-sea cephalopod resources is capable of expansion. Malcolm Clarke, among other cephalopod scientists, suggested that there are vast resources of oceanic squids in the world. His assessment was based on the estimated amount of food needed to sustain the world's sperm whale population (Clarke, 1996; Santos *et al.*, 2001). This potential resource presents an enticing opportunity for fisheries, but others have cast doubt on the large abundance of such species. In addition, a practical challenge relates to palatability, although fishery companies are currently developing processing methods for ammonium-rich squid tissues to permit their marketing as food products.

Fisheries management and governance in Europe is currently undergoing a revolution, with the implementation of an integrated ecosystem assessment and management approach as part of the reform of the Common Fisheries Policy, while at the same time looking ahead to a future integrated marine management, in which fisheries are simply one of many relevant sectors. The move towards an ecosystem approach to fisheries is of course not unique to Europe. However, the steep increase in data requirements (compared to single species assessments) presents a real obstacle, especially in a period of economic recession; thus, alternative approaches based on indicators and expert judgement are also likely to be needed. In this context, the Marine Strategy Framework Directive (MSFD) of the European Union is relevant, as it focuses on the development of indicators of ocean health. At least in the United Kingdom, there are plans to develop cephalopod indicators for the MSFD. As a final note, cephalopod waste from fishery processing, and cephalopod species of lesser interest for human consumption, may be increasingly used in animal feedstuffs, fertilizers (Fetter *et al.*, 2013), or other industrial products such as pharmaceuticals.

### Cephalopod conservation (A. Louise Allcock)

Assessing the conservation status of a wide range of cephalopod taxa reveals just how little is known about many species. Studies carried out for the International Union for the Conservation of Nature (IUCN) Red List, focusing on different higher cephalopod taxa (e.g. Sepiida, Oegopsida, Cirrata), have found that between about 50 and 75% of species in these

higher taxa are 'Data Deficient' (Kemp *et al.*, 2012). Many species are known from just a few specimens, so that little is known about their biology and ecology. In some cases, we can conclude that species meet the IUCN category of 'Least Concern' simply because their very wide geographical distribution and high fecundity with planktonic dispersal means that they are unlikely to be impacted across their entire distribution range, despite the possible existence of local threats, so the lack of data is actually under-reported.

In particular, data are lacking for cirrate octopods. These cephalopods are potentially long-lived, are slow to reach maturity and have low fecundity (Collins & Villanueva, 2006). *Opisthoteuthis*, the most shallow cirrate genus, is characterized by a close association with the benthos, and is therefore the genus most affected by commercial deep sea trawling. *Opisthoteuthis chathamensis* was considered 'Nationally Critical' on the New Zealand Red List (Freeman *et al.*, 2010) and Collins & Villanueva (2006) suggested that populations of other species may already have declined as a result of deep sea trawling. However, a lack of specific population data and information on fisheries impacts will likely prevent many potentially vulnerable species being listed in a category other than 'Data Deficient'. Therefore, one of the future challenges for cephalopod biologists is to improve the quality and consistency of population estimates for all cephalopod species, particularly those subjected to direct or indirect anthropogenic impacts, including fishing.

Taxonomic issues may also prevent the actual vulnerability of a species from being reflected in its conservation assessment. Recent dramatic declines in the size of the *Sepia apama* population in the upper Spencer Gulf (South Australia) have been well documented (Hall, 2008, 2010), but attempts to have this population listed as 'Critically Endangered' under Australia's Environment Protection and Biodiversity Conservation Act 1999 failed (Anonymous, 2011), apparently because the population had not been formally described as a distinct species, despite little evidence of it inter-breeding with other populations (Anonymous, 2011). However, a temporary localized ban on fishing was enacted in 2013. *Sepia apama* was assessed as 'Near Threatened' on the IUCN Red List (Barratt & Allcock, 2012), but this assessment considered the whole range of the species, as is normal practice. The IUCN assessment notes that 'If the population in the upper Spencer Gulf is shown to be a separate species then the Spencer Gulf species would be assessed as Endangered.'

Conservation efforts for *Nautilus* are similarly hindered. The slow growth and low fecundity of nautilus (Dunstan *et al.*, 2011) make them vulnerable to fishing pressure and several overfished populations have crashed (Dunstan *et al.*, 2010). The very wide distribution range reported for *N. pompilius* suggests that threats are likely to be local, until one considers recent genetic data. For example, molecular phylogenetic work (Bonacum *et al.*, 2011; Sinclair *et al.*, 2011; Williams *et al.*, 2012) indicates that *N. pompilius* comprises several distinct phylogenetic species. This suggests that the impact of fisheries is far more likely to lead to species extinctions than previously thought. However, descriptions of individual species within the *N. pompilius* species complex and accurate information on the range of these species are required if conservation listings are to reflect the perceived vulnerability to anthropogenic impacts. Therefore, ensuring that all cephalopod species are accurately described, and

that species complexes and cryptic species are distinguished, constitutes an essential future challenge for cephalopod conservation.

## DISCUSSION

Cephalopods will continue to attract scientific interest, particularly in the fields of physiology, genetics, ecology and fisheries. Furthermore, the traditional scientific disciplines of taxonomy and morphology are currently being rejuvenated by the application of new technologies. Studies on cephalopods will continue to range from the organismic level (e.g. physiology, behaviour), to the species level (e.g. taxonomy, systematics, population dynamics, distribution, abundance), and finally to the ecosystem level (e.g. fisheries, biodiversity, conservation). In addition, new cephalopod research is emerging on issues such as global climate change and ocean acidification or habitat and food-web modelling.

Cephalopods constitute an important trophic link between the lower levels of food webs and top predators (Young *et al.*, 2013). About 800 species of extant cephalopods have been described, but we only have sufficient data to understand the life history (e.g. distribution, habitat, feeding ecology, reproductive biology) for approximately 60 species (Jereb & Roper, 2005, 2010; Jereb *et al.*, 2014). Therefore, taxonomists and geneticists must increasingly work together to ensure that specimen data uploaded to databases are based on correctly identified specimens. The combination of molecular genetics, DNA barcoding, and digital morphological techniques offers new ways to resolve numerous outstanding issues in cephalopod taxonomy and evolution. In this context, an increase in molecular work is of particular importance, because the lack of transcriptomic and genomic information, for example, has limited advances in neurobiology research, where cephalopods act as model organisms (Zhang *et al.*, 2012).

Cephalopods have several interesting traits, which make them suitable model organisms for broad evolutionary research. For instance, they have one of the largest size ranges of any metazoan class and could, therefore, become model species for studying metazoan growth and metabolism. Furthermore, cephalopods show a remarkable diversity of life history traits, and a better understanding of evolutionary relationships among cephalopods would help to determine the plasticity of these traits or could reveal simple switches between individual strategies. In addition, because of the presence of mineralized structures or the planktonic early life stages, most cephalopod species may be highly sensitive to global climate change and/or ocean acidification, because of the presence of mineralized structures or the planktonic early life stages. Hence, cephalopods should be increasingly used as model organisms to predict the effects of global warming on ocean life (Hanlon *et al.*, 1989; Rodhouse, 2013).

In addition, a quantitative PCR approach should finally allow reliable identification of cephalopod species as prey. Also, because top predators are still a major source of information on cephalopods, novel techniques in trophic research such as the analysis of stable isotopes, DNA, or fatty acids as well as 3D imaging will complement the data obtained by conventional means (Jarman *et al.*, 2004; Barrett *et al.*, 2007; Karnovsky *et al.*, 2012). These latter techniques have suffered due to a decline in taxonomists actually able to perform this type of work (Pearson *et al.*, 2011). Furthermore, the use of

ecological tracers, especially fine-scale analyses of tracer molecules within informative structures, such as statoliths, beaks or shells, will offer new insights into stock structuring and individual life history (Cherel & Hobson, 2005; Cherel *et al.*, 2009a; Ramos & Gonzalez-Solis, 2012). In addition, recent improvements in specimen tagging now allow studying movements of cuttlefish and squid (Gilly *et al.*, 2006; Semmens *et al.*, 2007; Wearmouth *et al.*, 2013). If tag weight could be further reduced and some attachment issues resolved, this approach might be extendible to smaller cephalopod species or earlier developmental stages.

Future research should certainly also focus on the ecology of cephalopod species, particularly for those species with immediate commercial fishery interest. As a result of the increasing international capacity to explore deeper environments, deep-sea cephalopods will attract the attention of fisheries and research. For example, the increasing amount of deep sea imagery calls for creative solutions to compiling and using such data. Advanced and more complete morphological data will improve our ability to identify specimens based on photographic records alone. For the well-known commercial cephalopod species, long-term monitoring and the establishment of marine protected areas will be the primary focus of discussion in cephalopod conservation. Furthermore, the usage of the continental shelf slope, deep sea, and oceanic areas by numerous pelagic predators and cephalopods is a further area that will receive attention from conservationists (Harris *et al.*, 2007; Game *et al.*, 2009; Tancell *et al.*, 2012). In order to catch fast-swimming cephalopods, efforts should be channelled into the use of more efficient nets that allow catching sub-adult or adult stages of the larger species. Incorporating such research foci into major multidisciplinary projects could become essential for success in obtaining funding.

At present, the effects of global climate change, linked with acidification, warming, and expanding hypoxia, perhaps represent the biggest threat to certain species of cephalopods, but also constitute a challenge to researchers, policymakers, and society at large. From a scientific point of view, one of the greatest challenges in this discipline will be to discriminate between the effects of global climate change and fisheries on cephalopod populations. In this regard, experimentation has always been an important approach to resolving open questions in cephalopod research. From a technological perspective, cephalopod culture should be further developed to meet challenges such as the development of sustainable artificial foods or the control of reproduction and genetic manipulation. In addition, the successful maintenance of deep-sea and oceanic cephalopods in captivity would be a major step forward to understanding their life cycles and would contribute to assessing the potential impact of fisheries targeted at other species in their habitats. Such research efforts would also constitute an important contribution to cephalopod conservation efforts (Hoving *et al.*, 2014).

Finally, collaboration, in particular between scientific disciplines, is essential for tackling some of the big scientific challenges the world is currently facing. Early career scientists, such as the CIAC Young Researchers group, should make ample use of novel, digital approaches to networking, communication and collaboration. Social media, along with digital repositories as well as new data and research sharing protocols, will continue to facilitate international and interdisciplinary research on cephalopods and related scientific areas.

Furthermore, education and outreach initiatives are bound to follow suit, resulting in the increased dissemination of cephalopod science to a wider audience.

## ACKNOWLEDGEMENTS

We thank António M. de Frias Martins, past President of the Uitas Malacologica and Peter Marko, President of the American Malacological Society for organizing the 2013 World Congress of Malacology, and the Cephalopod International Advisory Committee for endorsing a symposium held in honour of Malcolm R. Clarke. In particular, we would like to thank the many professional staff from the University of the Azores for their hospitality, organization, troubleshooting and warm welcome to the Azores. We also thank Malcolm Clarke's widow, Dorothy, his daughter Zoë, José N. Gomes-Pereira and numerous colleagues and friends of Malcolm's from around the world for joining us at Ponta Delgada. We are grateful to Lyndsey Claro (Princeton University Press) for granting copyright permissions.

## REFERENCES

- Albertin C.B., Bonnaud L., Brown C.T., Crookes-Goodson W.J., da Fonseca R.R., Di Cristo C., Dilkes B.P., Edsinger-Gonzales E., Freeman R.M., Hanlon R.T., Koenig K.M., Lindgren A.R., Martindale M.Q., Minx P., Moroz L.L., Nödl M.T., Nyholm S.V., Ogura A., Pungor J.R., Rosenthal J.J.C., Schwarz E.M., Shigeno S., Strugnell J.M., Wollesen T., Zhang G. and Ragsdale C.W. (2012) Cephalopod genomics: a plan of strategies and organization. *Standards in Genomic Sciences* 7, 175–188.
- Al-Janabi S., Huisman A. and Van Diest P.J. (2012) Digital pathology: current status and future perspectives. *Histopathology* 61, 1–9.
- André J., Grist E.P.M., Semmens J.M., Pecl G.T. and Segawa S. (2009) Effects of temperature on energetics and the growth pattern of benthic octopuses. *Marine Ecology Progress Series* 374, 167–179.
- André J., Haddon M. and Pecl G.T. (2010) Modelling climate-change-induced nonlinear thresholds in cephalopod population dynamics. *Global Change Biology* 16, 2866–2875.
- Andrews P.L.R., Darmailacq A.-S., Dennison N., Gleadall I.G., Hawkins P., Messenger J.B., Osorio D., Smith V.J. and Smith J.A. (2013) The identification and management of pain, suffering and distress in cephalopods, including anaesthesia, analgesia and humane killing. *Journal of Experimental Marine Biology and Ecology* 447, 46–64.
- Anonymous (2011) *Advice to the minister for sustainability, environment, water, population and communities from the Threatened Species Scientific Committee (the Committee) on Amendment to the list of Threatened Population under the Environment Protection and Biodiversity Conservation Act 1999 (EPBC Act)*. Department of Environment and Heritage (DEH), Australia, pp. 1–10.
- Arkhipkin A.I. and Roa-Ureta R. (2005) Identification of ontogenetic growth models for squid. *Marine and Freshwater Research* 56, 371–386.
- Bakun A. and Csirke J. (1998) *Environmental processes and recruitment variability*. FAO Fisheries Technical Paper, no. 376. Rome: FAO.
- Barratt I. and Allcock L. (2012) *Sepia apama*. In 2013 I. (ed.): IUCN Red List of Threatened Species. Version 2013.1. <http://www.iucnredlist.org>.
- Barrett R.T., Camphusysen C.J., Anker-Nilssen T., Chardine J.W., Furness R.W., Garthe S., Hüppop O., Leopold M.F., Montevecchi

- W.A. and Veit R.R. (2007) Diet studies of seabirds: a review and recommendations. *ICES Journal of Marine Science* 64, 1675–1691.
- Berquist R.M., Gledhill K.M., Peterson M.W., Doan A.H., Baxter G.T., Yopak K.E., Kang N., Walker H.J., Hastings P.A. and Frank L.R. (2012) The Digital Fish Library: using MRI to digitize, database, and document the morphological diversity of fish. *PLoS ONE* 7, e34499. doi:10.1371/journal.pone.0034499.
- Bograd S.J., Castro C.G., Di Lorenzo E., Palacios D.M., Bailey H.R. and Gilly W. (2008) Oxygen declines and the shoaling of the hypoxic boundary in the California Current. *Geophysical Research Letters* 35, L12607.
- Bonacum J., Landman N.H., Mapes R.H., White M.M., White A.-J. and Irlam J. (2011) Evolutionary radiation of present-day *Nautilus* and *Allonautilus*. *American Malacological Bulletin* 29, 77–93.
- Bower J.R. and Sakurai Y. (1996) Laboratory observations on *Todarodes pacificus* (Cephalopoda: Ommastrephidae) egg masses. *American Malacological Bulletin* 13, 65–71.
- Bowman R.E., Stillwell C.E., Michaels W.L. and Grosslein M.D. (2000) *Food of Northwest Atlantic fishes and two common species of squid*. US Department of Commerce, NOAA Technical Memo NMFS NE, USA.
- Boyle P. and Boletzky S.v. (1996) Cephalopod populations: definition and dynamics. *Philosophical Transactions of the Royal Society, B* 351, 985–1002.
- Boyle P. and Rodhouse P.G. (2005) *Cephalopods ecology and fisheries*. Oxford: Blackwell Science.
- Bush S.L. (2012) Economy of arm autotomy in the mesopelagic squid *Octopoteuthis deletron*. *Marine Ecology Progress Series* 458, 133–140.
- Caddy J.F. and Rodhouse P.G. (1998) Cephalopod and groundfish landings: evidence for ecological change in global fisheries? *Reviews in Fish Biology and Fisheries* 8, 431–444.
- Cherel Y., Duhamel G. and Gasco N. (2004) Cephalopod fauna of sub-antarctic islands: new information from predators. *Marine Ecology Progress Series* 266, 143–156.
- Cherel Y., Fontaine C., Jackson G.D., Jackson C.H. and Richard P. (2009a) Tissue, ontogenic and sex-related differences in  $\delta^{13}\text{C}$  and  $\delta^{15}\text{N}$  values of the oceanic squid *Todarodes filippovae* (Cephalopoda: Ommastrephidae). *Marine Biology* 156, 699–708.
- Cherel Y. and Hobson K. (2005) Stable isotopes, beaks and predators: a new tool to study the trophic ecology of cephalopods, including giant and colossal squids. *Proceedings of the Royal Society, B* 272, 1601–1607.
- Cherel Y., Ridoux V., Spitz J. and Richard P. (2009b) Stable isotopes document the trophic structure of a deep-sea cephalopod assemblage including giant octopod and giant squid. *Biology Letters* 5, 364–367.
- Cherel Y., Weimerskirch H. and Trouve C. (2000) Food and feeding ecology of the neritic-slope forager black-browed albatross and its relationships with commercial fisheries in Kerguelen waters. *Marine Ecology Progress Series* 207, 183–199.
- Cheung D.K.B., Brunke A.J., Akkari N., Souza C.M. and Pape T. (2013) Rotational scanning electron microscopy (rSEM): a novel and accessible tool to visualize and communicate complex morphology. *ZooKeys* 328, 47–57.
- Clarke M.R. (1962) The identification of cephalopod “beaks” and the relationship between beak size and total body weight. *Bulletin of the British Museum (Natural History) Zoology* 8, 419–480.
- Clarke M.R. (1977) Beaks, nets and numbers. *Symposium Zoological Society London* 38, 89–126.
- Clarke M.R. (1986) *A handbook for the identification of cephalopod beaks*. Oxford: Clarendon Press.
- Clarke M.R. (1996) The role of cephalopods in the world’s oceans. *Philosophical Transactions of the Royal Society, B* 351, 977–1112.
- Clarke M.R. (2006) Oceanic cephalopod distribution and species diversity in the Eastern North Atlantic. *Arquipélago—Life and Marine Sciences* 23A, 27–46.
- Clarke M.R. and Pascoe P.L. (1997) Cephalopod species in the diet of a sperm whale (*Physeter catodon*) stranded at Penzance, Cornwall. *Journal of the Marine Biological Association of the United Kingdom* 77, 1255–1258.
- Clarke M.R. and Pascoe P.L. (1998) The influence of an electric light on the capture of oceanic cephalopods by a midwater trawl. *Journal of the Marine Biological Association of the United Kingdom* 78, 561–575.
- Collins M.A. and Villanueva R. (2006) Taxonomy, ecology and behaviour of the cirrate octopods. *Oceanography and Marine Biology: an Annual Review* 44, 277–322.
- Constable A.J., Melbourne-Thomas J., Corney S.P., Arrigo K., Barbraud C., Barnes D., Bindoff N., Boyd P., Brandt A., Costa D.P., Davidson A., Ducklow H., Emmerson L., Fukuchi M., Gutt J., Hindell M.A., Hofmann E.E., Hosie G., Lida T., Jacob S., Johnston N.M., Kawaguchi S., Koubbi P., Lea M.-A., Makhado A., Massom R., Meiners K., Meredith M., Murphy E., Nicol S., Richerson K., Riddle M.J., Rintoul S.R., Walker Smith Jr. W., Southwell C., Stark J.S., Sumner M., Swadling K., Takahashi K., Trathan P.N., Welsford D., Weimerskirch H., Westwood K., Wienecke B., Wolf-Gladrow D., Wright S., Xavier J.C. and Ziegler P. (in press) Change in Southern Ocean ecosystems I: how changes in physical habitats directly affect marine biota. *Global Change Biology*.
- Crisci J.V. (2006) Commentary. One-dimensional systematist: perils in a time of steady progress. *Systematic Botany* 31, 217–221.
- Daly H. and Peck L.S. (2000) Energy balance and cold adaptation in the Antarctic octopus *Pareledone charcoti* (Joubin). *Journal of Experimental Marine Biology and Ecology* 245, 197–214.
- Dawe E.G., Colbourne E.B. and Drinkwater K.F. (2000) Environmental effects on recruitment of short-finned squid (*Illex illecebrosus*). *ICES Journal of Marine Science* 57, 1002–1013.
- de Carvalho M.R., Bockmann F.A., Amorim D.S., Brandao C.R.F., de Vivo M., de Figueiredo J.L., Britski H.A., de Pinna C.C., Menezes N.A., Marques F.P.L., Papavero N., Canello E.M., Crisci J.V., McEachran J.D., Schelly C., Lundberg J.G., Gill A.C., Britz R., Wheeler Q.D., Stiassny M.L.J., Parenti L.R., Page L.M., Wheeler W.C., Faivovich J., Vari R.P., Grande L., Humphries C.J., DeSalle R., Ebach M.C. and Nelson G.J. (2007) Taxonomic impediment or impediment to taxonomy? A commentary on systematics and the cybertaxonomic-automation paradigm. *Evolutionary Biology* 34, 140–143.
- Decker C.J. and O’Dor R. (2003) A Census of marine life: unknowable or just unknown? *Oceanologica Acta* 25, 179–186.
- Diaz R.J. and Rosenberg R. (2008) Spreading dead zones and consequences for marine ecosystems. *Science* 321, 926–929.
- Dunstan A., Alanis O. and Marshall J. (2010) *Nautilus pompilius* fishing and population decline in the Philippines: a comparison with an unexploited Australian *Nautilus* population. *Fisheries Research* 106, 239–247.
- Dunstan A.J., Ward P.D. and Marshall N.J. (2011) *Nautilus pompilius* life history and demographics at the Osprey Reef Seamount, Coral Sea, Australia. *PLoS ONE* 6, e16312. doi:10.1371/journal.pone.0016312.
- Eliceiri K.W., Berthold M.R., Goldberg I.G., Ibanez L., Manjunath B.S., Martone M.E., Murphy R.F., Peng H., Plant A.L., Roysam B., Stuurman N., Swedlow J.R., Tomancak P. and Carpenter A.E. (2012) Biological imaging software tools. *Nature Methods* 9, 697–710.

- FAO (2005) Review of the state of world marine fishery resources. *FAO Fisheries Technical Paper* 457, 235.
- Fetter J.C., Brown R.N. and Amador J.A. (2013) Effectiveness of squid hydrolysate as a home lawn fertilizer. *HortScience* 48, 380–385.
- Fiorito G., Affuso A., Anderson D., Basil J., Bonnaud L., Botta G., Cole A., D'Angelo L., Girolamo P., Dennison N., Dickel L., Cosmo A., Cristo C., Gestal C., Fonseca R., Grasso F., Kristiansen T., Kuba M., Maffucci F., Manciooco A., Mark F., Melillo D., Osorio D., Palumbo A., Perkins K., Ponte G., Raspa M., Shashar N., Smith J., Smith D., Sykes A., Villanueva R., Tublitz N., Zullo L. and Andrews P. (2014) Cephalopods in neuroscience: regulations, research and the 3Rs. *Invertebrate Neuroscience* 14, 13–36.
- Freeman D.J., Marshall B.A., Ah Yong S.T., Wing S.R. and Hitchmough R.A. (2010) Conservation status of New Zealand marine invertebrates, 2009. *New Zealand Journal of Marine and Freshwater Research* 44, 129–148.
- Game E.T., Grantham H.S., Hobday A.J., Pressey R.L., Lombard A.T., Beckley L.E., Gjerde K., Bustamante R., Possingham H.P. and Richardson A.J. (2009) Pelagic protected areas: the missing dimension in ocean conservation. *Trends in Ecology and Evolution* 24, 360–369.
- Gilly F., Beman J.M., Litvin S.Y. and Robison B.H. (2013) Oceanographic and biological effects of shoaling of the oxygen minimum zone. *Annual Reviews in Marine Science* 5, 393–420.
- Gilly W.F., Markaida U., Baxter C.H., Block B.A., Boustany A., Zeidberg L., Reisenbichler K.R., Robison B., Bazzino G. and Salinas C. (2006) Vertical and horizontal migrations by the jumbo squid *Dosidicus gigas* revealed by electronic tagging. *Marine Ecology Progress Series* 324, 1–17.
- Golikov A.V., Sabirov R.M., Lubin P.A. and Jørgensen L.L. (2013) Changes in distribution and range structure of Arctic cephalopods due to climatic changes of the last decades. *Biodiversity* 14, 28–35.
- Guerra Á., Rodríguez-Navarro A.B., González A.F., Romanek C.S., Álvarez-Lloret P. and Pierce G.J. (2010) Life-history traits of the giant squid *Architeuthis dux* revealed from stable isotope signatures recorded in beaks. *ICES Journal of Marine Science* 67, 1425–1431.
- Guinot D., Monroig O., Navarro J.C., Varó I., Amat F. and Hontoria F. (2013) Enrichment of *Artemia metanauplii* in phospholipids and essential fatty acids as a diet for common octopus (*Octopus vulgaris*) paralarvae. *Aquaculture Nutrition* 19, 837–844.
- Gutowska M., Melzner F., Pörtner H. and Meier S. (2010) Cuttlebone calcification increases during exposure to elevated seawater pCO<sub>2</sub> in the cephalopod *Sepia officinalis*. *Marine Biology* 157, 1653–1663.
- Gutowska M.A., Pörtner H.O. and Melzner F. (2008) Growth and calcification in the cephalopod *Sepia officinalis* under elevated seawater pCO<sub>2</sub>. *Marine Ecology Progress Series* 373, 303–309.
- Hall K.C. (2008) Estimated abundance and biomass of Giant Australian Cuttlefish *Sepia apama* at the spawning aggregation area in northern Spencer Gulf, South Australia. In Anon (ed.) *Olympic dam expansion draft environmental impact statement 2009*. Appendix 05.5. New South Wales, Australia: BHP Billiton, pp. 81–92.
- Hall K.C. (2010) *Estimated abundance and biomass of giant Australian cuttlefish Sepia apama in the spawning aggregation area of northern Spencer Gulf, South Australia*. Report Prepared for the Olympic Dam EIS Project, Australia.
- Hallinan N.M. and Lindberg D.R. (2011) Comparative analysis of chromosome counts infers three paleopolyploidies in the Mollusca. *Genome Biology and Evolution* 3, 1150–1217.
- Hanlon R.T., Bidwell J.P. and Tait R. (1989) Strontium is required for statolith development and thus normal swimming behaviour of hatching cephalopods. *Journal of Experimental Biology* 141, 187–195.
- Harris J., Haward M., Jabour J. and Woehler E.J. (2007) A new approach to selecting Marine Protected Areas (MPAs) in the Southern Ocean. *Antarctic Science* 19, 189–194.
- Helmuth B., Mieszkowska N.P.M. and Hawkins S. (2006) Living on the edge of two changing worlds: forecasting the responses of rocky intertidal ecosystems to climate change. *Annual Review of Ecology Evolution and Systematics* 37, 373–404.
- Hobson K.A. and Cherel Y. (2006) Isotopic reconstruction of marine food webs using cephalopod beaks: new insight from captive raised *Sepia officinalis*. *Canadian Journal of Zoology* 84, 766–770.
- Hochberg F.G. and Hatfield E.M.C. (2002) A brief history of the cephalopod international advisory council (CIAC). *Bulletin of Marine Science* 71, 17–30.
- Hoving H.J.T., Gilly W.F., Markaida U., Benoit-Bird K.J., West-Brown Z., Daniel P., Field J., Paressenti L., Liu B. and Campos B. (2013) Extreme plasticity in life history strategy allows a migratory predator (jumbo squid) to cope with a changing climate. *Global Change Biology* 19, 2089–2103.
- Hoving H.J.T., Perez J.A.A., Bolstad K., Braid H., Evans A.B., Fuchs D., Judkins H., Kelly J.T., Marian J.E.A.R., Nakajima R., Piatkowski U., Reid A., Vecchione M. and Xavier J.C. (2014) The study of deep-sea cephalopods. *Advances in Marine Biology* 67, 235–259.
- Hoving H.J.T. and Robison B.H. (2012) Vampire squid: detritivores in the oxygen minimum zone. *Proceedings of the Royal Society, B* 279, 4559–4567.
- Hulata G. (2001) Genetic manipulations in aquaculture: a review of stock improvement by classical and modern technologies. *Genetica* 111, 155–173.
- Hunsicker M.E., Essington T.E., Aydin K.Y. and Ishida B. (2010a) Predatory role of the commander squid *Berryteuthis magister* in the eastern Bering Sea: insights from stable isotopes and food habits. *Marine Ecology Progress Series* 415, 91–108.
- Hunsicker M.E., Essington T.E., Watson R. and Sumaila U.R. (2010b) The contribution of cephalopods to global marine fisheries: can we have our squid and eat them too? *Fish and Fisheries* 11, 421–438.
- Hunt J.C. (1999) Laboratory observations of the feeding behavior of the cirrate octopod, *Grimpoteuthis* sp.: one use of cirri. *Veliger* 42, 152–156.
- Hunt S. and Nixon M. (1981) A comparative study of protein composition in the chitin-protein complexes of the beak, pen, sucker disc, radula and oesophageal cuticle of cephalopods. *Comparative Biochemistry and Physiology, B* 68, 535–546.
- Iglesias J., Fuentes L. and Villanueva R. (2014) *Cephalopod culture*. Amsterdam: Springer-Verlag.
- Iglesias J., Sánchez F.J., Bersano J.G.F., Carrasco J.F., Dhont J., Fuentes L., Linares F., Muñoz J.L., Okumura S., Roo J., van der Meeren T., Vidal E.A.G. and Villanueva R. (2007) Rearing of *Octopus vulgaris* paralarvae: present status, bottlenecks and trends. *Aquaculture* 266, 1–15.
- Imber M.J. (1978) The squid families Cranchiidae and Gonatidae (Cephalopoda: Teuthoidea) in the New Zealand region. *New Zealand Journal of Zoology* 5, 445–484.
- Jackson G.D., Bustamante P., Cherel Y., Fulton E.A., Grist E.P.M., Jackson C.H., Nichols P.D., Pethybridge H., Phillips K., Ward R.D. and Xavier J.C. (2007) Applying new tools to cephalopod trophic dynamics and ecology: perspectives from the Southern Ocean Cephalopod Workshop, February 2–3, 2006. *Review of Fish Biology and Fisheries* 17, 79–99.
- Jarman S.N., Deagle B.E. and Gales N.J. (2004) Group-specific polymerase chain reaction for DNA-based analysis of species diversity and identity in dietary samples. *Molecular Ecology* 13, 1313–1322.

- Jereb P. and Roper C.F.E.** (2005) Cephalopods of the world. An annotated and illustrated catalogue of cephalopod species known to date. *FAO Species Catalogue for Fishery Purposes*. Rome: FAO.
- Jereb P. and Roper C.F.E.** (2010) Cephalopods of the world. An annotated and illustrated catalogue of cephalopod species known to date, Rome. *FAO Species Catalogue for Fishery Purposes*. Rome: FAO.
- Jereb P., Roper C.F.E., Norman M.D. and Finn J.K.** (2014) Cephalopods of the world. An annotated and illustrated catalogue of cephalopod species known to date. Volume 3 Octopods and vampire squids. *FAO Species Catalogue for Fishery Purposes*. Rome: FAO.
- Kaplan M.B., Mooney T.A., McCorkle D.C. and Cohen A.L.** (2013) Adverse effects of ocean acidification on early development of squid *Doryteuthis pealeii*. *PLoS ONE* 8, e63714. doi:10.1371/journal.pone.0063714.
- Karnovsky N.J., Hobson K.A. and Iverson S.J.** (2012) From lavage to lipids: estimating diets of seabirds. *Marine Ecology Progress Series* 451, 263–284.
- Keeling R.F., Körtzinger A. and Gruber N.** (2010) Ocean deoxygenation in a warming world. *Annual Reviews in Marine Science* 2, 199–229.
- Kelley D.J., Farhoud M., Meyerand E.M., Nelson D.L., Ramirez L.F., Dempsey R.J., Wolf A.J., Alexander A.L. and Davidson R.J.** (2007) Creating physical 3D stereolithograph models of brain and skull. *PLoS ONE* 2, e1119. doi:10.1371/journal.pone.0001119.
- Kemp R., Peters H., Allcock L., Carpenter K., Obura D., Polidoro B. and Richman N.** (2012) Marine invertebrate life. In Collen B., Böhm M., Kemp R. and Baillie J.E.M. (eds) *Spineless: status and trends of the world's invertebrates*. London: Zoological Society of London, pp. 34–45.
- Kerbl A., Handschuh S., Nödl M.T., Metscher B.D., Walz M. and Wanninger A.** (2013) Micro-CT in cephalopod research: investigating the internal anatomy of a sepiolid squid using a non-destructive technique with special focus on the ganglionic system. *Journal of Experimental Marine Biology and Ecology* 447, 140–148.
- Keyl F., Arguelles J. and Tafur R.** (2011) Interannual variability in size structure, age, and growth of jumbo squid (*Dosidicus gigas*) assessed by modal progression analysis. *ICES Journal of Marine Science* 68, 507–518.
- Kubodera T. and Furuhashi M.** (1987) *Manual for the identification of cephalopods and myctophids in the stomach contents*. Tokyo, Japan: Fisheries Agency Japan.
- Kumar P., Ziegler A., Grahn A., Hee C.S. and Ziegler A.** (2010) Leaving the structural ivory tower, assisted by interactive 3D PDF. *Trends in Biochemical Sciences* 35, 419–422.
- Lorrain A., Arguelles J., Alegre A., Bertrand A., Munaron J.M., Richard P. and Chérel Y.** (2011) Sequential isotopic signature along gladius highlights contrasted individual foraging strategies of jumbo squid (*Dosidicus gigas*). *PLoS ONE* 6, e22194. doi:10.1371/journal.pone.0022194.
- Lu C.C. and Ickeringill R.** (2002) *Cephalopod beak identification and biomass estimation techniques: tools for dietary studies of southern Australian finfishes*. Victoria: Victoria Museum Science Reports 6, pp. 1–65.
- MacKenzie B.R. and Schiedek D.** (2007) Daily ocean monitoring since the 1860s shows record warming of northern European seas. *Global Change Biology* 13, 1335–1347.
- Martínez R., Gallardo P., Pascual C., Navarro J., Sánchez A., Caamal-Monsreal C. and Rosas C.** (2014) Growth, survival and physiological condition of Octopus maya when fed a successful formulated diet. *Aquaculture* 426, 310–317.
- Mather J.A. and Anderson R.C.** (2007) Ethics and invertebrates: a cephalopod perspective. *Diseases of Aquatic Organisms* 75, 119–129.
- Meredith M.P. and King J.C.** (2005) Rapid climate change in the ocean west of the Antarctic Peninsula during the second half of the 20th century. *Geophysical Research Letters* 32, L19604.
- Metscher B.D.** (2009) MicroCT for comparative morphology: simple staining methods allow high-contrast 3D imaging of diverse non-mineralized animal tissues. *BMC Physiology* 9, 11.
- Moltschaniwskyj N.A., Hall K., Lipinski M.R., Marian J.E.A.R., Nishiguchi M., Sakai M., Shulman D.J., Sinclair B., Sinn D.L., Staudinger M., Gelderen R., Villanueva R. and Warnke K.** (2007) Ethical and welfare considerations when using cephalopods as experimental animals. *Reviews in Fish Biology and Fisheries* 17, 455–476.
- Murphy E.J. and Rodhouse P.G.** (1999) Rapid selection effects in a short-lived semelparous squid species exposed to exploitation: inferences from the optimisation of life-history functions. *Evolutionary Ecology* 13, 517–537.
- Murphy E.J., Rodhouse P.G. and Nolan C.** (1994) Modelling the selective effects of fishing on reproductive potential and population structure of squid. *ICES Journal of Marine Science* 51, 299–313.
- Murphy E.J., Watkins J.L., Trathan P.N., Reid K., Meredith M.P., Thorpe S.E., Johnston N.M., Clarke A., Tarling G.A., Collins M.A., Forcada J., Shreeve R.S., Atkinson A., Korb R., Whitehouse M.J., Ward P., Rodhouse P.G., Enderlein P., Hirst A.G., Martin A.R., Hill S.L., Staniland I.J., Pond D.W., Briggs D.R., Cunningham N.J. and Fleming A.H.** (2007) Spatial and temporal operation of the Scotia Sea ecosystem: a review of large-scale links in a krill centred food web. *Philosophical Transactions of the Royal Society, B* 362, 113–148.
- Navarro J., Coll M., Somes C.J. and Olson R.J.** (2013) Trophic niche of squids: insights from isotopic data in marine systems worldwide. *Deep-Sea Research II* 95, 93–102.
- Nixon M. and Young J.Z.** (2003) *The brains and lives of cephalopods*. New York: Oxford University Press.
- O'Dor R.K., Durward R.D. and Balch N.** (1977) Maintenance and maturation of squid (*Illex illecebrosus*) in a 15 meter circular pool. *Biological Bulletin. Marine Biological Laboratory, Woods Hole* 153, 322–335.
- O'Dor R.K. and Hoar J.A.** (2000) Does geometry limit squid growth? *ICES Journal of Marine Sciences* 57, 8–14.
- Ohkouchi N., Tsuda R., Chikaraishi Y. and Tanabe K.** (2013) A preliminary estimate of the trophic position of the deep-water ram's horn squid *Spirula spirula* based on the nitrogen isotopic composition of amino acids. *Marine Biology* 160, 773–779.
- Orr J.C., Fabry V.J., Aumont O., Bopp L., Doney S.C., Feely R.A., Gnanadesikan A., Gruber N., Ishida A., Joos F., Key R.M., Lindsay K., Maier-Reimer E., Matear R., Monfray P., Mouchet A., Najjar R.G., Plattner G.-K., Rodgers K.B., Sabine C.L., Sarmiento J.L., Schlitzer R., Slater R.D., Totterdell I.J., Weirig M.-F., Yamanaka Y. and Yool A.** (2005) Anthropogenic ocean acidification over the twenty-first century and its impact on calcifying organisms. *Nature* 437, 681–686.
- Overholtz W.J., Jacobson L.D. and Link J.S.** (2008) An ecosystem approach for assessment advice and biological reference points for the Gulf of Maine—Georges Bank Atlantic herring complex. *North American Journal of Fisheries Management* 28, 247–257.
- Overholtz W.J., Link J.S. and Suslowicz L.E.** (2000) Consumption of important pelagic fish and squid by predatory fish in the northeastern USA shelf ecosystem with some fishery comparisons. *ICES Journal of Marine Science* 57, 1147–1159.
- Packard A.** (1972) Cephalopods and fish: the limits of convergence. *Biological Reviews* 47, 241–307.

- Pauly D. (1998) Why squid, though not fish, may be better understood by pretending they are. In Payne A.I.L., Lipinski M.R., Clarke M.R. and Roeleveld M.A.C. (eds) *Cephalopod biodiversity, ecology and evolution*. *South African Journal of Marine Science* 20, 47–58.
- Pauly D., Alder J., Bennett E., Christensen V., Tyedmers P. and Watson R. (2003) The future for fisheries. *Science* 302, 1359–1361.
- Pauly D., Christensen V., Dalsgaard J., Froese R. and Torres F. Jr (1998) Fishing down marine food webs. *Science* 279, 860–863.
- Pearson D.L., Hamilton A.L. and Erwin T.L. (2011) Recovery plan for the endangered taxonomy profession. *Bioscience* 61, 58–63.
- Pecl G.T. and Jackson G.D. (2008) The potential impacts of climate change on inshore squid: biology, ecology and fisheries. *Reviews in Fish Biology and Fisheries* 18, 373–385.
- Pérez-Gándaras G. (1983) *Estudio de los cefalópodos ibéricos: sistemática y binomía mediante el estudio morfométrico comparado de sus mandíbulas*. PhD thesis. Universidad Complutense de Madrid, Spain.
- Piatkowski U., Pierce G.J. and Morais da Cunha M. (2001) Impact of cephalopods in the food chain and their interaction with the environment and fisheries: an overview. *Fisheries Research* 52, 5–10.
- Piatkowski U. and Pütz K. (1994) Squid diet of emperor penguins (*Aptenodytes forsteri*) in the eastern Weddell Sea, Antarctica during late summer. *Antarctic Science* 6, 241–247.
- Pierce G. and Boyle P. (1991) A review of methods for diet analysis in piscivorous marine mammals. *Oceanography and Marine Biology: an Annual Review* 29, 409–486.
- Pierce G.J., Belcari P., Bustamante P., Challier L., Cherel Y., Gonzales A., Guerra A., Jereb P., Kouéta N., Lefkaditou E., Moreno A., Pereira J., Piatkowski U., Pita C., Robin J.-P., Roel B., Santos M.B., Santurtún M., Seixas S., Shaw P., Smith J., Stowasser G., Valavanis V., Villanueva R., Wang J., Wangvoralak S., Weis M. and Zumholz K. (2010) The future of cephalopod populations, fisheries, culture, and research in Europe. *ICES Cooperative Research Report* 303, 86–118.
- Pierce G.J. and Portela J. (2014) Fisheries production and market demand. In Iglesias J., Fuentes L. and Villanueva R. (eds) *Cephalopod culture*. Dordrecht, The Netherlands: Springer-Verlag, pp. 41–58.
- Quinn T.J. and Deriso R.B. (1999) *Quantitative fish dynamics*. Oxford: Oxford University Press.
- Ramos R. and Gonzalez-Solis J. (2012) Trace me if you can: the use of intrinsic biogeochemical markers in marine top predators. *Frontiers in Ecology and the Environment* 10, 258–266.
- Rands M.R.W., Adams W.M., Bennun L., Butchert S.H.M., Clements A., Coomes D., Entwistle A., Hodge I., Kapos V., Scharlemann J.P.W., Sutherland W.J. and Vira B. (2010) Biodiversity conservation: challenges beyond 2010. *Science* 329, 1298–1303.
- Raven J., Caldeira K., Elderfield H., Hoegh-Guldberg O., Liss P., Riebesell U., Shepherd J., Turley C. and Watson A. (2005) *Ocean acidification due to increasing atmospheric carbon dioxide*. London: The Royal Society.
- Richard A. (1971) *Contribution à l'étude expérimentale de la croissance et de la maturation sexuelle de Sepia officinalis L. (Mollusque, Céphalopode)*. Université de Lille, France, 264 pp.
- Robison B.H., Reisenbichler K.R., Hunt J.C. and Haddock S.H.D. (2003) Light production by the arm tips of the deep-sea cephalopod *Vampyroteuthis infernalis*. *Biological Bulletin. Marine Biological Laboratory, Woods Hole* 205, 102–109.
- Rockstrom J., Steffen W., Noone K., Persson A., Chapin F.S., Lambin E.F., Lenton T.M., Scheffer M., Folke C., Schellnhuber H.J., Nykvist B., de Wit C.A., Hughes T., van der Leeuw S., Rodhe H., Sorlin S., Snyder P.K., Costanza R., Svedin U., Falkenmark M., Karlberg L., Corell R.W., Fabry V.J., Hansen J., Walker B., Liverman D., Richardson K., Crutzen P. and Foley J.A. (2009) A safe operating space for humanity. *Nature* 461, 472–475.
- Rodhouse P.G. (2013) Role of squid in the Southern Ocean pelagic ecosystem and the possible consequences of climate change. *Deep-Sea Research Part II: Topical Studies in Oceanography* 95, 129–138.
- Rodhouse P.G.K., Pierce G.J., Nichols O.C., Sauer W.H.H., Arkhipkin A.I., Laptikhovskiy V.V., Lipinski M.R., Ramos J., Gras M., Kidokoro H., Sadayasu K., Pereira J., Lefkaditou E., Pita C., Gasalla M., Haimovici M., Sakai M. and Downey N. (in press) Environmental effects on cephalopod population dynamics: implications for management of fisheries. *Advances in Marine Biology*.
- Rosa R., Dierssen H.M., Gonzalez L. and Seibel B.A. (2008a) Large-scale diversity patterns of cephalopods in the Atlantic open ocean and deep-sea. *Ecology* 89, 3449–3461.
- Rosa R., Dierssen H.M., Gonzalez L. and Seibel B.A. (2008b) Ecological biogeography of cephalopod mollusks in the Atlantic Ocean: historical and contemporary causes of coastal diversity patterns. *Global Ecology and Biogeography* 17, 600–610.
- Rosa R., Gonzalez L., Dierssen H.M. and Seibel B.A. (2012a) Environmental determinants of latitudinal size-trends in cephalopods. *Marine Ecology Progress Series* 464, 153–165.
- Rosa R., Pimentel M.S., Boavida-Portugal J., Teixeira T., Trübenbach K. and Diniz M.S. (2012b) Ocean warming enhances malformations, premature hatching, metabolic suppression and oxidative stress in the early life stages of a keystone invertebrate. *PLoS ONE* 7, e38282. doi:10.1371/journal.pone.0038282.
- Rosa R. and Seibel B.A. (2008) Synergistic effects of climate-related variables suggest future physiological impairment in a top oceanic predator. *Proceedings of the National Academy of Sciences of the United States of America* 105, 20776–20780.
- Rosa R., Trübenbach K., Pimentel M.S., Boavida-Portugal J., Faleiro F., Baptista M., Dionísio G., Calado R., Pörtner H.O. and Repolho T. (2014) Differential impacts of ocean acidification and warming on winter and summer progeny of a coastal squid (*Loligo vulgaris*). *Journal of Experimental Biology* 217, 518–525.
- Rosa R., Trübenbach K., Repolho T., Pimentel M., Faleiro F., Boavida-Portugal J.M.B., Dionísio G., Leal M., Calado R. and Pörtner H.O. (2013a) Lower hypoxia thresholds of cuttlefish life stages living in a warm acidified ocean. *Proceedings of the Royal Society, B* 280, 20131695.
- Rosa R., Yamashiro C., Markaida U., Rodhouse P.G., Waluda C.M., Salinas C.A., Keyl F., O'Dor R., Stewart J.S. and Gilly W.F. (2013b) *Dosidicus gigas*, Humboldt squid. In Rosa R., Pierce G. and O'Dor R. (eds) *Advances in squid biology, ecology and fisheries. Volume II—oegopsid squids*. New York: Nova Publishers, pp. 169–206.
- Rosas C., Tut J., Baeza J., Sánchez A., Sosa V., Pascual C., Arena L., Domingues P. and Cuzon G. (2008) Effect of type of binder on growth, digestibility, and energetic balance of *Octopus maya*. *Aquaculture* 275, 291–297.
- Rosas C., Valero A., Caamal-Monsreal C., Uriarte I., Farias A., Gallardo P., Sánchez A. and Domingues P. (2013) Effects of dietary protein sources on growth, survival and digestive capacity of *Octopus maya* juveniles (Mollusca: Cephalopoda). *Aquaculture Research* 44, 1029–1044.
- Royer J., Peries P. and Robin J.-P. (2002) Stock assessments of English Channel loliginid squids: updated depletion methods and new analytical methods. *ICES Journal of Marine Science* 59, 445–457.
- Rubin D.J., Miserez A. and Waite J.H. (2010) Diverse strategies of protein sclerotization in marine invertebrates: structure-property

- relationships in natural biomaterials. *Advances in Insect Physiology* 38, 75–133.
- Ruiz-Cooley R.I., Ballance L.T. and McCarthy M.D.** (2013) Range expansion of the jumbo squid in the NE Pacific:  $\delta^{15}\text{N}$  decrypts multiple origins, migration and habitat use. *PLoS ONE* 8, e59651. doi:10.1371/journal.pone.0059651.
- Ruiz-Cooley R.I., Villa E.C. and Gould W.R.** (2010) Ontogenetic variation of  $\delta^{13}\text{C}$  and  $\delta^{15}\text{N}$  recorded in the gladius of the jumbo squid *Dosidicus gigas*: geographic differences. *Marine Ecology Progress Series* 399, 187–198.
- Ruthensteiner B. and Heß M.** (2008) Embedding 3D models of biological specimens in PDF publications. *Microscopy Research and Technique* 71, 778–786.
- Santos M.B., Clarke M.R. and Pierce G.J.** (2001) Assessing the importance of cephalopods in the diets of marine mammals and other top predators: problems and solutions. *Fisheries Research* 52, 121–139.
- Schimmelmann A.** (2011) Carbon, nitrogen and oxygen stable isotope ratios in chitin. In Gupta N.S. (ed.) *Chitin. Topics in Geobiology* 34, 81–103.
- Semmens J., Doubleday Z., Hoyle K. and Pecl G.** (2011) A multilevel approach to examining cephalopod growth using *Octopus pallidus* as a model. *Journal of Experimental Biology* 214, 2799–2807.
- Semmens J.M. et al.** (2007) Approaches to resolving cephalopod movement and migration patterns. *Reviews in Fish Biology and Fisheries* 17, 401–423.
- Sinclair W., Newman S.J., Vianna G.M.S., Williams S. and Aspden W.J.** (2011) Spatial subdivision and genetic diversity in populations on the East and West Coasts of Australia: the multi-faceted case of *Nautilus pompilius* (Mollusca, Cephalopoda). *Reviews in Fisheries Science* 19, 52–61.
- Stramma L., Johnson G.C., Sprintall J. and Mohrholz V.** (2008) Expanding oxygen-minimum zones in the tropical oceans. *Science* 320, 655–658.
- Strugnell J.A. and Lindgren A.R.** (2007) A barcode of life database for the Cephalopoda: considerations and concerns. *Review of Fish Biology and Fisheries* 17, 337–344.
- Sutherland W.J., Clout M., Côté I.M., Daszak P., Depledge M.H., Fellman L., Fleishman E., Garthwaite R., Gibbons D.W. and De Lurio J.** (2010) A horizon scan of global conservation issues for 2010. *Trends in Ecology and Evolution* 25, 1–7.
- Sutherland W.J., Freckleton R.P., Godfray H.C.J., Beissinger S.R., Benton T., Cameron D.D., Carmel Y., Coomes D.A., Coulson T., Emmerson M.C., Hails R.S., Hays G.C., Hodgson D.J., Hutchings M.J., Johnson D., Jones J.P.G., Keeling M.J., Kokko H., Kunin W.E., Lambin X., Lewis O.T., Malhi Y., Mieszkowska N., Milner-Gulland E.J., Norris K., Phillimore A.B., Purves D.W., Reid J.M., Reuman D.C., Thompson K., Travis J.M.J., Turnbull L.A., Wardle D.A. and Wiegand T.** (2013) Identification of 100 fundamental ecological questions. *Journal of Ecology* 101, 58–67.
- Sutherland W.J. and Woodroof H.J.** (2009) The need for environmental horizon scanning. *Trends in Ecology and Evolution* 24, 523–527.
- Takai N., Onaka S., Ikeda Y., Yatsu A., Kidokoro H. and Sakamoto W.** (2000) Geographical variations in carbon and nitrogen stable isotope ratios in squid. *Journal of the Marine Biological Association of the United Kingdom* 80, 675–684.
- Tancell C., Phillips R.A., Xavier J.C., Tarling G.A. and Sutherland W.J.** (2012) Comparison of methods for determining key areas from tracking data: determining possible marine protected areas for seabirds. *Marine Biology* 160, 15–26.
- Turchin P.** (2003) *Complex population dynamics: a theoretical/empirical synthesis*. Princeton, NJ: Princeton University Press.
- Turner J., Bindschadler R., Convey P., di Prisco G., Fahrbach E., Gutt J., Hodgson D., Mayewski P. and Summerhayes C.** (2009) *Antarctic climate change and the environment*. Cambridge: Scientific Committee for Antarctic Research.
- Tyrrell M.C., Link J.S. and Moustahfid H.** (2011) The importance of including predation in fish population models: implications for biological reference points. *Fisheries Research* 108, 1–8.
- Tyrrell M.C., Link J.S., Moustahfid H. and Overholtz W.J.** (2008) Evaluating the effect of predation mortality on forage species population dynamics in the Northeast US continental shelf ecosystem using multispecies virtual population analysis. *ICES Journal of Marine Science* 65, 1689–1700.
- Vecchione M., Shea E., Bussarawit S., Anderson F., Alexeyev D., Lu C.C., Okutani T., Roeleveld M., Chotiyaputta C., Roper C., Jorgensen E. and Sukramongkol N.** (2005) Systematics of Indo-West Pacific loliginids. *Phuket Marine Biological Center Research Bulletin* 66, 23–26.
- Vidal E.A.G., Villanueva R., Andrade J.P., Gleadall I.G., Iglesias J., Koueta N., Rosas C., Segawa S., Albertin B.C., Caamal-Monsreal C., Chimal M.E., Edsinger-Gonzales E., Franco-Santos R.M., Gallardo P., Grasse B., Le Pabic C., Pascual C., Rumbedakis K. and Wood J.** (2014) Cephalopod culture: current status of main biological models and research priorities. *Advances in Marine Biology* 67, 1–98.
- Villanueva R. and Norman M.D.** (2008) Biology of the planktonic stages of benthic octopuses. *Oceanography and Marine Biology: an Annual Review* 46, 105–202.
- Villanueva R., Quintana D., Petroni G. and Bozzano A.** (2011) Factors influencing the embryonic development and hatching size of the oceanic squid *Illex coindetii* following *in vitro* fertilization. *Journal of Experimental Marine Biology and Ecology* 407, 54–62.
- Villanueva R., Staaqf D.J., Argüelles J., Bozzano A., Camarillo-Coop S., Nigmatullin C.M., Petroni G., Quintana D., Sakai M., Sakurai Y., Salinas-Zavala C.A., De Silva-Dávila R., Tafur R., Yamashiro C. and Vidal E.A.G.** (2012) A laboratory guide to *in vitro* fertilization of oceanic squids. *Aquaculture* 342/343, 125–133.
- Villanueva R., Sykes A.V., Vidal É.A.G., Roas C., Nabhitabhata J., Fuentes L and Iglesias J.** (2014) Current status and future challenges in cephalopod culture. In Iglesias J., Fuentes L. and Villanueva R. (eds) *Cephalopod culture*. Dordrecht, The Netherlands: Springer-Verlag, pp. 479–489.
- Walter T., Shattuck D.W., Baldock R., Bastin M.E., Carpenter A.E., Duce S., Ellenberg J., Fraser A., Hamilton N., Pieper S., Ragan M.A., Schneider J.E., Tomancak P. and Heriche J.K.** (2010) Visualization of image data from cells to organisms. *Nature Methods* 7, S26–S41.
- Waluda C.M., Trathan P.N. and Rodhouse P.G.** (1999) Influence of oceanographic variability on recruitment in the genus *Illex argentinus* (Cephalopoda: Ommastrephidae) fishery in the South Atlantic. *Marine Ecology Progress Series* 183, 159–167.
- Waluda C.M., Yamashiro C. and Rodhouse P.G.** (2006) Influence of the ENSO cycle on the light-fishery for *Dosidicus gigas* in the Peru Current: an analysis of remotely sensed data. *Fisheries Research* 79, 56–63.
- Watson A.M., Barrows F.T. and Place A.R.** (2013) Taurine supplementation of plant derived protein and n-3 fatty acids are critical for optimal growth and development of cobia, *Rachycentron canadum*. *Lipids* 48, 899–913.
- Wearmouth V.J., Durkin O.C., Bloor I.S.M., McHugh M.J., Rundle J. and Sims D.W.** (2013) A method for long-term electronic tagging and tracking of juvenile and adult European common cuttlefish



- Sepia officinalis*. *Journal of Experimental Marine Biology and Ecology* 447, 149–155.
- Williams R.C., Newman S.J. and Sinclair W.** (2012) DNA barcoding in *Nautilus pompilius* (Mollusca: Cephalopoda): evolutionary divergence of an ancient species in modern times. *Invertebrate Systematics* 26, 548–560.
- Wilson E.O.** (2003) The encyclopedia of life. *Trends in Ecology and Evolution* 18, 77–80.
- Wolff G.A.** (1984) *Identification and estimation of size from the beaks of 18 species of cephalopods from the Pacific Ocean*. NOAA Technical Report NMFS 17.
- Wood J.B., Kenchington E. and O'Dor R.K.** (1998) Reproduction and embryonic development time of *Bathypolypus arcticus*, a deep-sea octopod (Cephalopoda: Octopoda). *Malacologia* 39, 11–19.
- Xavier J.C. and Cherel Y.** (2009) *Cephalopod beak guide for the Southern Ocean*. Cambridge: British Antarctic Survey.
- Xavier J.C., Clarke M.R., Magalhães M.C., Stowasser G., Blanco C. and Cherel Y.** (2007) Current status of using beaks to identify cephalopods: III international workshop and training course on cephalopod beaks, Faial Island, Azores, April 2007. *Arquipélago—Life and Marine Sciences* 24, 41–48.
- Xavier J.C., Croxall J.P. and Cresswell K.A.** (2005) Boluses: an effective method to assess the proportions of cephalopods in the diet of albatrosses. *Auk* 122, 1182–1190.
- Xavier J.C. and Peck L.S.** (in press) Antarctic marine ecosystems. In Liggett D. (ed.) *Antarctic research*. New York: Springer-Verlag.
- Xavier J.C., Phillips R.A. and Cherel Y.** (2011) Cephalopods in marine predator diet assessments: why identifying upper and lower beaks is important. *ICES Journal of Marine Science* 68, 1857–1864.
- Yandell M. and Ence D.** (2012) A beginner's guide to eukaryotic genome annotation. *Nature Reviews Genetics* 13, 329–342.
- Young I.A.G., Pierce G.J., Stowasser G., Santos M.B., Wang J., Boyle P.R., Shaw P.W., Bailey N., Tuck I. and Collins M.A.** (2006) The Moray Firth directed squid fishery. *Fisheries Research* 78, 39–43.
- Young J.W., Olson R.J. and Rodhouse P.G.K.** (2013) The role of squid in pelagic ecosystems. *Deep-Sea Research Part II: Topical Studies in Oceanography* 95, 1–224.
- Young J.Z.** (1971) *The anatomy of the nervous system of Octopus vulgaris*. Oxford: Clarendon Press.
- Young R.E.** (2009) *Links to cephalopod beaks on the Tree of Life*. Available at: [http://tolweb.org/notes/?note\\_id=5274](http://tolweb.org/notes/?note_id=5274) (accessed 30 September 2013).
- Zavala C.A.S., Ferreri G.A.B. and Keyl F.** (2012) Eulerian approach to the estimation of growth rates and population structure of jumbo squid (*Dosidicus gigas*) in the central Gulf of California. *Journal of Shellfish Research* 31, 801–807.
- Zeidberg L.D. and Robison B.H.** (2007) Invasive range expansion by the Humboldt squid, *Dosidicus gigas*, in the eastern North Pacific. *Proceedings of the National Academy of Sciences* 104, 12948–12950.
- Zhang X., Mao Y., Huang Z., Qu M., Chen J., Ding S., Hong J. and Sun T.** (2012) Transcriptome analysis of the *Octopus vulgaris* central nervous system. *PLoS ONE* 7, e40320. doi:10.1371/journal.pone.0040320.
- Ziegler A.** (2012) Broad application of non-invasive imaging techniques to echinoids and other echinoderm taxa. *Zoosymposia* 7, 53–70.
- Ziegler A., Kunth M., Mueller S., Bock C., Pohmann R., Schröder L., Faber C. and Giribet G.** (2011a) Application of magnetic resonance imaging in zoology. *Zoomorphology* 130, 227–254.
- Ziegler A. and Menze B.H.** (2013) Accelerated acquisition, visualization, and analysis of zoo-anatomical data. In Zander J. and Mosterman P.J. (eds) *Computation for humanity—information technology to advance society*. Boca Raton, FL: CRC Press, pp. 234–259.
- Ziegler A., Mietchen D., Faber C., von Hausen W., Schöbel C., Sellerer M. and Ziegler A.** (2011b) Effectively incorporating selected multimedia content into medial publications. *BMC Medicine* 9, 17.
- Ziegler A., Ogurreck M., Steinke T., Beckmann F., Prohaska S. and Ziegler A.** (2010) Opportunities and challenges for digital morphology. *Biology Direct* 5, 45.
- and
- Zúñiga O.R., Olivares A.P. and Ossadón L.R.** (1995) Influencia de la luz en la maduración sexual de hembras *Octopus mimus*. *Estudios Oceanológicos* 14, 75–76.

**Correspondence should be addressed to:**

J.C. Xavier  
 British Antarctic Survey, Natural Environment Research  
 Council, High Cross, Madingley Road  
 Cambridge CB3 0ET, UK  
 email: [jccx@cantab.net](mailto:jccx@cantab.net)